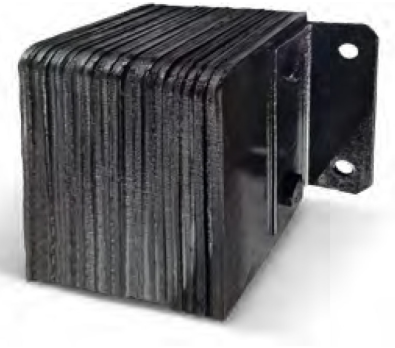


LAMINATED BUMPER

ARCHITECTURAL DATA SHEET

GENERAL DESCRIPTION

The laminated dock bumper is manufactured with a body of several sheets of rubber, aligned and pressed; and two black steel anchor elements. This piece is used to be installed on loading and unloading docks to protect it, and the trailers or trucks from impacts that may occur when arriving at said dock.

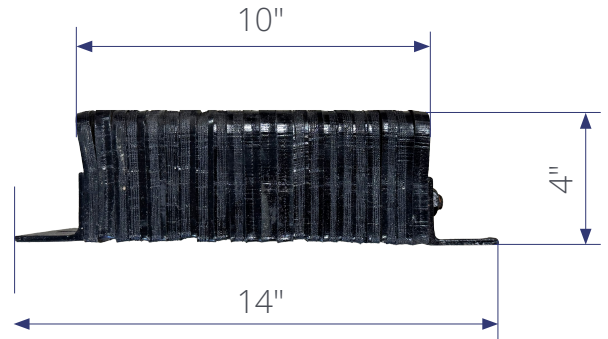


The bumper has two holes in each steel anchor element for installation by inserting a screw with a plug or they can also be welded. Here we can see some features of the product:

- Absorbs over 80% of truck impact and shock to protect dock and building
- Constructed to last and provide years of protection
- Performs on any truck dock under any weather condition or prolonged exposure
- Anchored through thick steel angles to provide stability and shape retention
- Eliminates costly repairs from severe shock to docks

MATERIAL

This dock bumper is made with multiple layers of rubber and two black steel anchor elements. It has UV protection and is resistant to moisture, oil, temperature changes, and impacts due to its flexibility. Its anchor elements can be welded to the dock or secured by inserting a bolt with a tank or, depending on the dock, the bolt can be replaced with a nut. The body is made with several layers of pressed rubber. The anchor element is made of steel with two holes for fixing.



SPECIFICATIONS

DIMENSIONS	Standard: 14" x 10" x 4"
FIXING	Screw or welded
MATERIAL	Rubber
AREA OF USE	Interior and exterior
INCLUDES	Screws
RESISTANT TO...	<ul style="list-style-type: none">✓ UV rays✓ Humidity✓ Oil✓ Temperature variations

