

FIXED HEAD PAD COMPRESSION DOCK SEAL












ARCHITECTURAL DATA SHEET



SPECIFICATIONS

- Enviro-Green Foam with 99% memory
- 4" wide yellow guide stripe
- Condensation drainage holes
- Compression release holes
- Vapor barrier
- Lock stitched double stitched seams
- Waterproof design
- Treated lumber or optional steel backers

COLOR FABRIC SEAL

- **22oz Vinyl**    
- **40oz Vinyl**    
- **50oz Vinyl** 
- **16oz Csm** 
- **40oz Csm** 



FEATURES

Energy Savings



Designed to suit up to 9'w x 9'h openings, this foam-filled compression loading dock seal is an effective way to reduce energy loss, save hundreds of dollars annually in heating, and cooling costs per dock position.

Conditioned Air



With a 95% sealing efficiency, this model is excellent in servicing a wide variety of trailers by keeping conditioned air in, while keeping the unwanted weather and elements out.

Tight Seal



Two foam-filled side pads and one foam-filled head pad wrap around the door opening providing a tight seal against the rear of the trailer.

Waterproof



The airtight design of this model does an excellent job of minimizing water entering the loading dock area once the trailer has docked, keeping the loading area dry and safe for employees while loading and unloading trailers.

FIXED HEAD PAD COMPRESSION DOCK SEAL

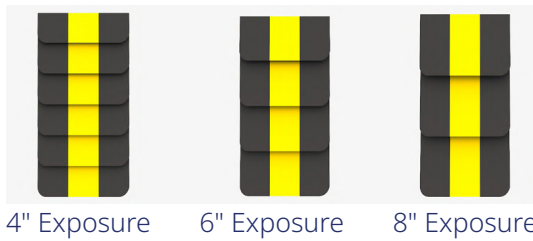
ARCHITECTURAL DATA SHEET



CUSTOMIZE YOUR DOCK SEALS

➔ **Wear Pleats:** Increase the life of your loading dock seal while providing superior protection from the impact of incoming trailers.

Standard Wear Pleats



4" Exposure

6" Exposure

8" Exposure

Replaceable Wear Pleats



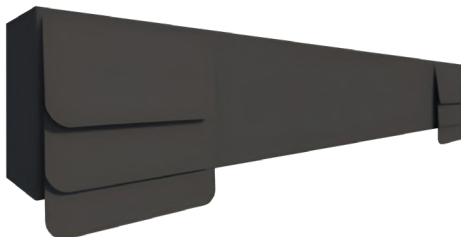
4" Exposure

6" Exposure

8" Exposure

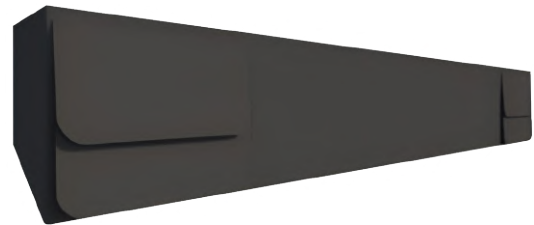
➔ **Custom Head Pads:** Customize your head pad specific to your application.

Higher Head Pad



Range 14"-24"

Bevelled Head Pad



➔ **Drop Curtains:** Add a drop below the head pad in order to seal lower trucks.

Fabric



PVC

