

KH - HYDRAULIC DOCK LEVELER

ARCHITECTURAL DATA SHEET



The Alapont Logistics Solutions KH Model (Hydraulic Dock Leveler) is characterized by its strength and safety. It's the most economical and easy way to bridge the gap between the building and the back of the truck bed. It has a hinged lip that allows the lip to adapt perfectly to the truck. It incorporates the use of hydraulics to raise and lower both the platform and lip. A single push button activates a hydraulic pump for operating both lip and hoist cylinders.

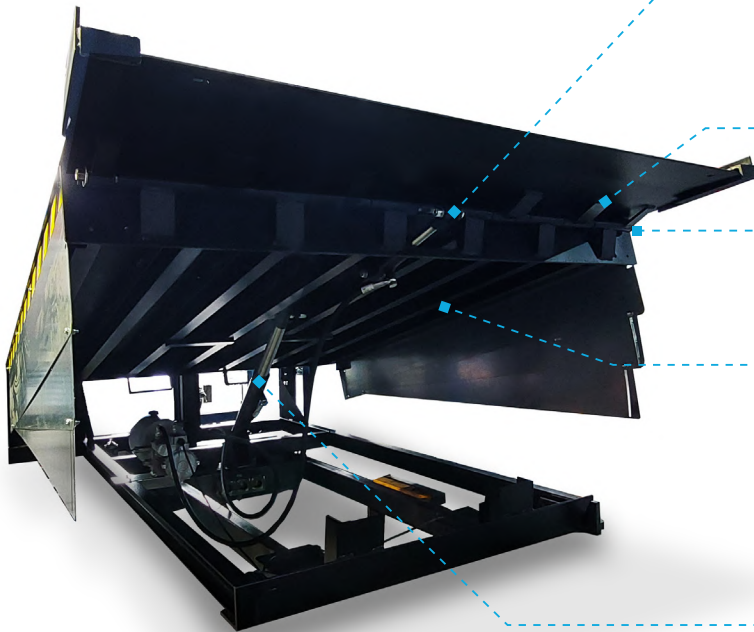
IDEAL APPLICATION

It is the solution suitable for any loading dock.



STANDARD FEATURES

- **Structural Steel Support Members.**
- **Black Lacquered paint RAL 9005.**
- **Anti-corrosion treatment and powder coated painted with oven-polymerized paint at 392 °F.**
- **+/- 12" Dock Service Range.**
- **Full Featured Push Button Control Box.**
- **Power-Up and Power-Down Control.**
- **3" High Run-off Guards.**



STANDARD CAPACITIES

35.000 Lbs

45.000 Lbs

60.000 Lbs

All standard models can be manufactured with all load capacities.

FOLDING LIP CYLINDER

Cylinder for the folding lip. This guarantees control of the lip movement with total safety and firmness.

REINFORCED HINGES

Hinge reinforced with gussets.

LIP HINGE

Sturdy folding lip hinge reinforced with gussets and 1" shaft.

PLATFORM

Reinforced with a minimum of 8 I Beam providing it with greater strength and durability, aiming to prevent deformations on the surface after the continuous passage of transport vehicles.

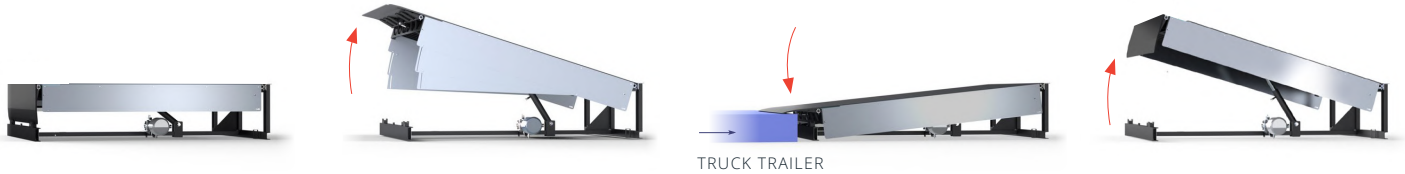
RELIABLE SAFE OPERATION

Cylinder equipped with an emergency non-return valve to ensure safe and balance

KH - HYDRAULIC DOCK LEVELER

ARCHITECTURAL DATA SHEET

APPLICATION



1 Once the area is secure, press and hold the green "RAISE" button on the control panel until the ramp and lip are fully extended.

2 Release the lift button once the ramp and lip are extended. The ramp will then slowly lower onto the vehicle.

3 Once the ramp is securely in place, proceed with loading and unloading operations.

4 Press the "RAISE" button again. The ramp will raise, and the lip will begin to lower. Release the lift button when the lip reaches a 90° angle, allowing the ramp to automatically descend to its resting position.

TECHNICAL DATA

CONSTRUCTION

PLATFORM

- Constructed of 1/4" diamond plate.
- Reinforced by 8 or 10 "I Beam" profiles. (Depending on the Capacity)
- Hinges: reinforced with plates and 1" shaft ensure maximum strength
- Operating Range (Depends on the Length of the Dock): +-10" or +- 12"

LIP PLATE

- Made of 1/2" diamond plate.
- Projection: 16", 18" or 20"
- Lip hinges: reinforced with plates and has a 1" shaft.

HYDRAULICS

GENERAL OPERATION

- Hoist cylinder with velocity fuse + Folding lip cylinder, guaranteeing safe operation
- Power: 1,1 kw

Hydraulic System powered by dual-cylinder hydraulics for efficient lifting and lowering. A fixed displacement gear pump delivers fluid to the hoist cylinder (2" ID bore) and lip cylinder. Hydraulic system can be deck mounted or installed in remote location. Hydraulic system can also be integrated to power the vehicle restraint system if equipped. It is completely sealed to prevent entry of dirt, dust, or sand.

ELECTRICAL

VOLTAGE OPTIONS

115V 1Ph / 230V 1Ph / 230V 3Ph / 460V 3Ph

CONTROL PANEL

- Option 1: Simple
- Option 2: Complete (Emergency Stop Button)

CERTIFICATIONS

All components, connections and wiring are UL Listed or recognized.

ACTIVATION

Single push button activates the hydraulic pump for operating both lip and hoist cylinders

PROTECTION

IP 64

EQUIPPED WITH

Enclosure, Startup Indicator Light, Control Device.

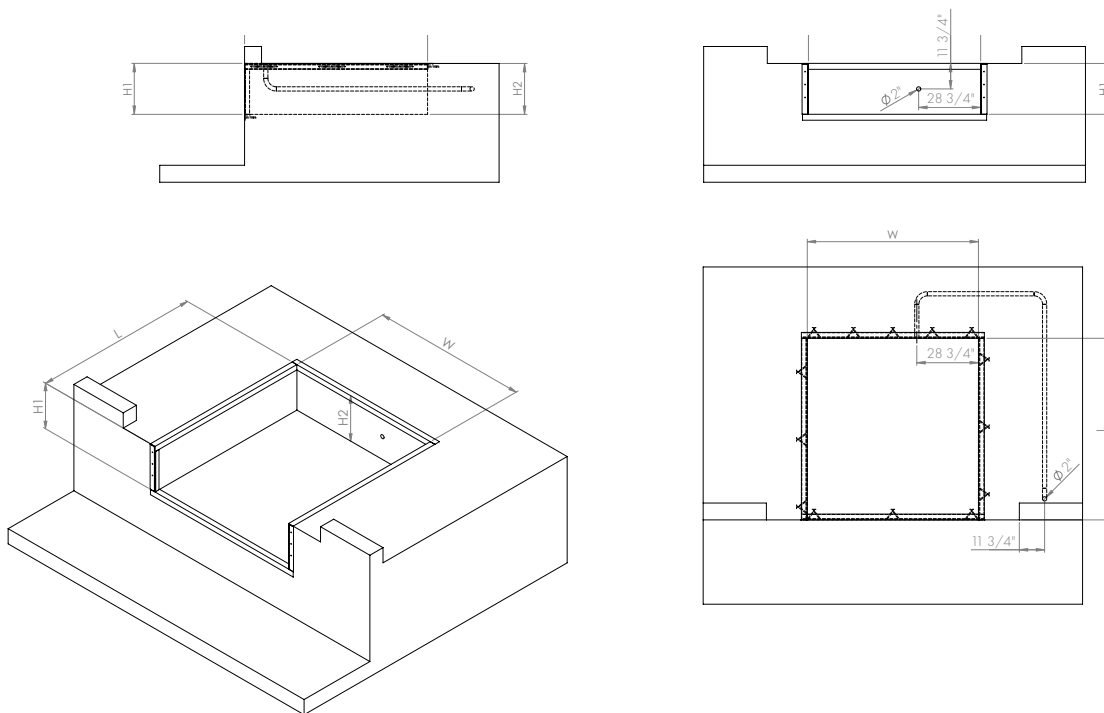
KH - HYDRAULIC DOCK LEVELER

ARCHITECTURAL DATA SHEET

OPTIONAL EQUIPMENT

- App to calculate energy savings.
- Standard electrical control panel.
- Full equipment control panel.
- Steel Faced Dock Bumpers.
- 6" Thick Dock Bumpers.
- Vertical Bumpers.
- Dock Lights.
- Lip Keeper.
- Safety Wheel chocks.
- Available lip typology options:
 1. Chamfer: The lip narrows towards the tip.
 2. Segmented lip: The lip is segmented into multiple parts to adapt to the width of the different vehicles being operated.
- Available lip size: 16", 18", 20".
- Other finishing options:
 - Lacquered:
 1. Gray RAL 7011
 2. Blue RAL 5010
 - Stainless steel.
 - Hot dip galvanized.
 - Zinc powder primer:
 1. Black RAL 9005
 2. Gray RAL 7011
 3. Blue RAL 5010

STANDARD DOCK LEVELER PIT DETAIL



MODEL	DOCK MEASURES	PIT WIDTH-W	PIT LENGTH-L	PIT FRONT -H1	PIT REAR - H2
KH66	6'X 6' (72" X 64" X 19")	74"	63"	20"	19"
KH68	6'X 8' (72" X 88" X 19")	74"	87"	20"	19"
KH76	7'X 6' (83" X 64" X 19")	85"	63"	20"	19"
KH78	7'X 8' (83" X 88" X 19")	85"	87"	20"	19"