

KM - MECHANICAL DOCK LEVELER

ARCHITECTURAL DATA SHEET



Designed to bridge the gap between a warehouse floor and a transport vehicle, facilitating the safe and efficient loading and unloading of goods. It is operated via a manual pull-chain mechanism that activates a spring system, allowing for easy height adjustment without the need for electrical power.

IDEAL APPLICATION

It is the solution suitable for any loading dock.



STANDARD FEATURES

- **Structural Steel Support Members.**
- **Black Lacquered paint RAL 9005.**
- **Anti-corrosion treatment and powder coated painted with oven-polymerized paint at 392 °F.**
- **+/- 12" Dock Service Range.**
- **3" High Run-off Guards.**

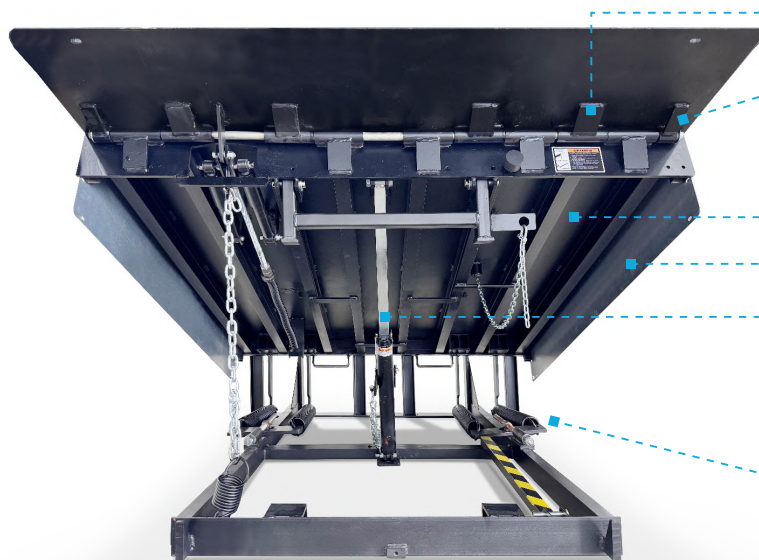
STANDARD CAPACITIES

35.000 Lbs

45.000 Lbs

60.000 Lbs

All standard models can be manufactured with all load capacities.



REINFORCED HINGES

Hinges reinforced with gussets.

LIP HINGE

Sturdy folding lip hinge reinforced with gussets and 1" shaft.

PLATFORM

SAFETY BASEBOARDS

HOLD DOWN

A locking mechanism that secures the dock leveler in a closed position, preventing unintended movement during loading and unloading operations

SPRINGS

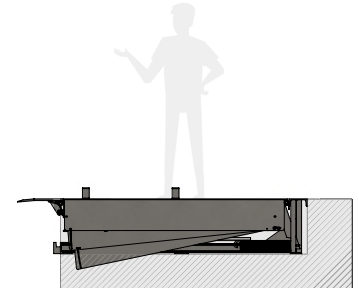
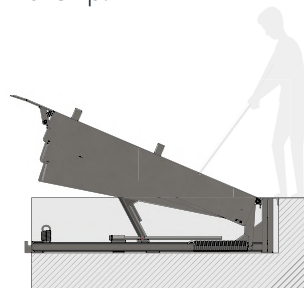
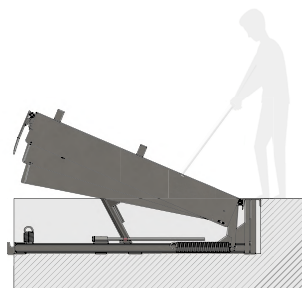
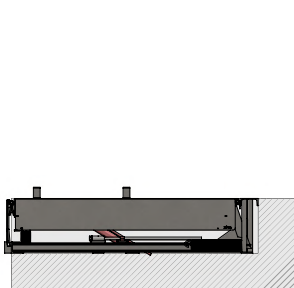
Facilitate the easy lifting and lowering of the dock, ensuring controlled motion for optimal operator safety.

1 Position and secure the vehicle.

2 Once the area is secure, pull the chain lever to raise the ramp.

3 This action will open the ramp and the lip.

4 Then, walk on the ramp to lower it and rest it on the vehicle.



KM - MECHANICAL DOCK LEVELER

ARCHITECTURAL DATA SHEET

TECHNICAL DATA

CONSTRUCTION

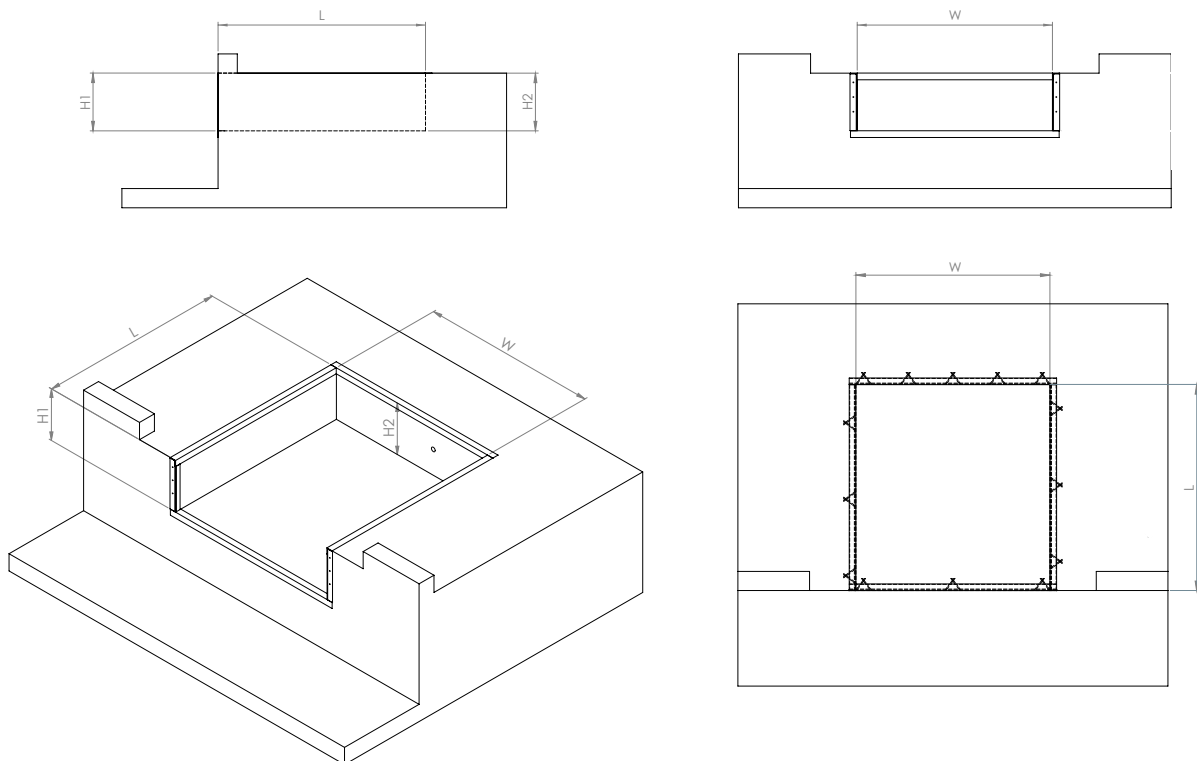
PLATFORM

- Constructed of 1/4" diamond plate.
- Reinforced by 8 or 10 "I Beam" profiles. (Depending on the Capacity)
- Hinges: reinforced with plates and 1" shaft ensure maximum strength
- Operating Range (Depends on the Length of the Dock): +-10" or +- 12"

LIP PLATE

- Made of 1/2" diamond plate.
- Projection: 16", 18" or 20"
- Lip hinges: reinforced with plates and has a 1" shaft.

STANDARD DOCK LEVELER PIT DETAIL

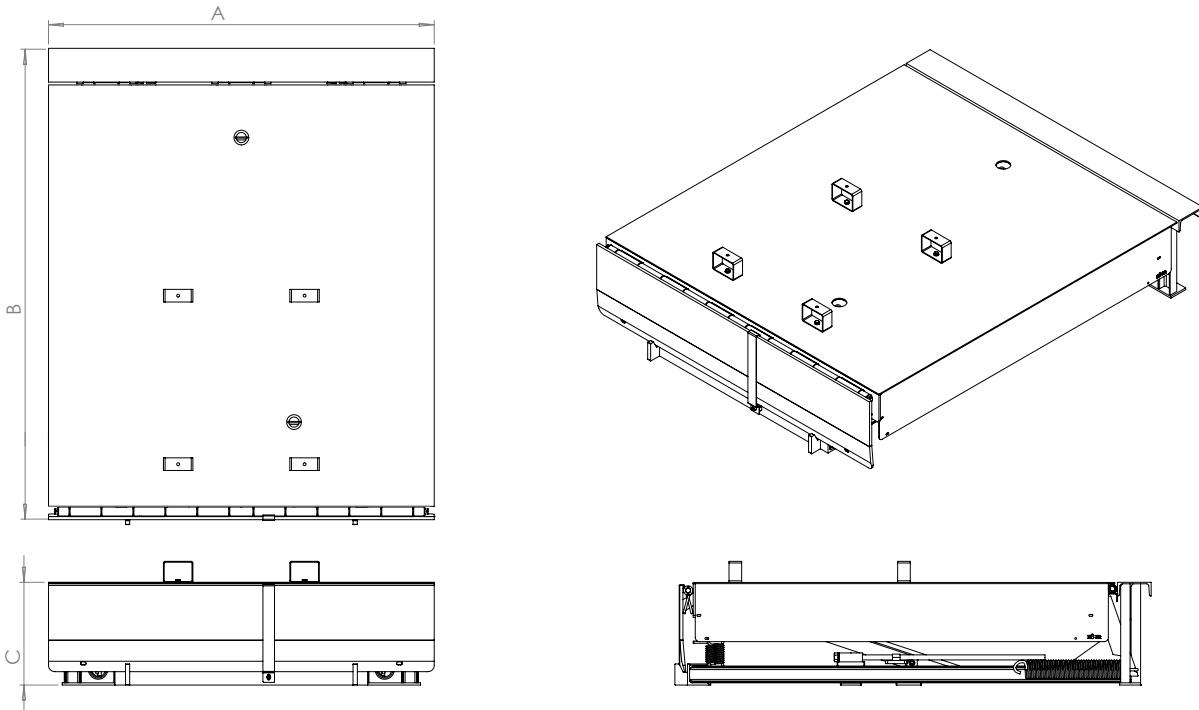


MODEL	DOCK MEASURES	PIT WIDTH-W	PIT LENGTH-L	PIT FRONT -H1	PIT REAR - H2
KM66	6'X 6' (72" X 64" X 19")	74"	63"	20"	19"
KM68	6'X 8' (72" X 88" X 19")	74"	87"	20"	19"
KM76	7'X 6' (83" X 64" X 19")	85"	63"	20"	19"
KM78	7'X 8' (83" X 88" X 19")	85"	87"	20"	19"

KM - MECHANICAL DOCK LEVELER

ARCHITECTURAL DATA SHEET

STANDARD DOCK LEVELER DRAWINGS



MODEL	MEASURES	DIM A	DIM B	DIM C	MAX RANGE	MIN RANGE
KM66	6'X 6'	6 FT (72")	6 ft (64")	19"	10"	10"
KM68	6'X 8'	6 FT (72")	8 ft (88")	19"	12"	12"
KM76	7'X 6'	7 FT (83")	6 ft (64")	19"	10"	10"
KM78	7'X 8'	7 FT (83")	8 ft (88")	19"	12"	12"

OPTIONS

- Lip length: 18" – 20"
- Weather seals
- Full range toe guards
- Below dock control
- Foam insulation
- Abrasive surface
- Galvanized coating
- Pan, self-forming, with leveler welded in
- Special size units
- Barrier Lip