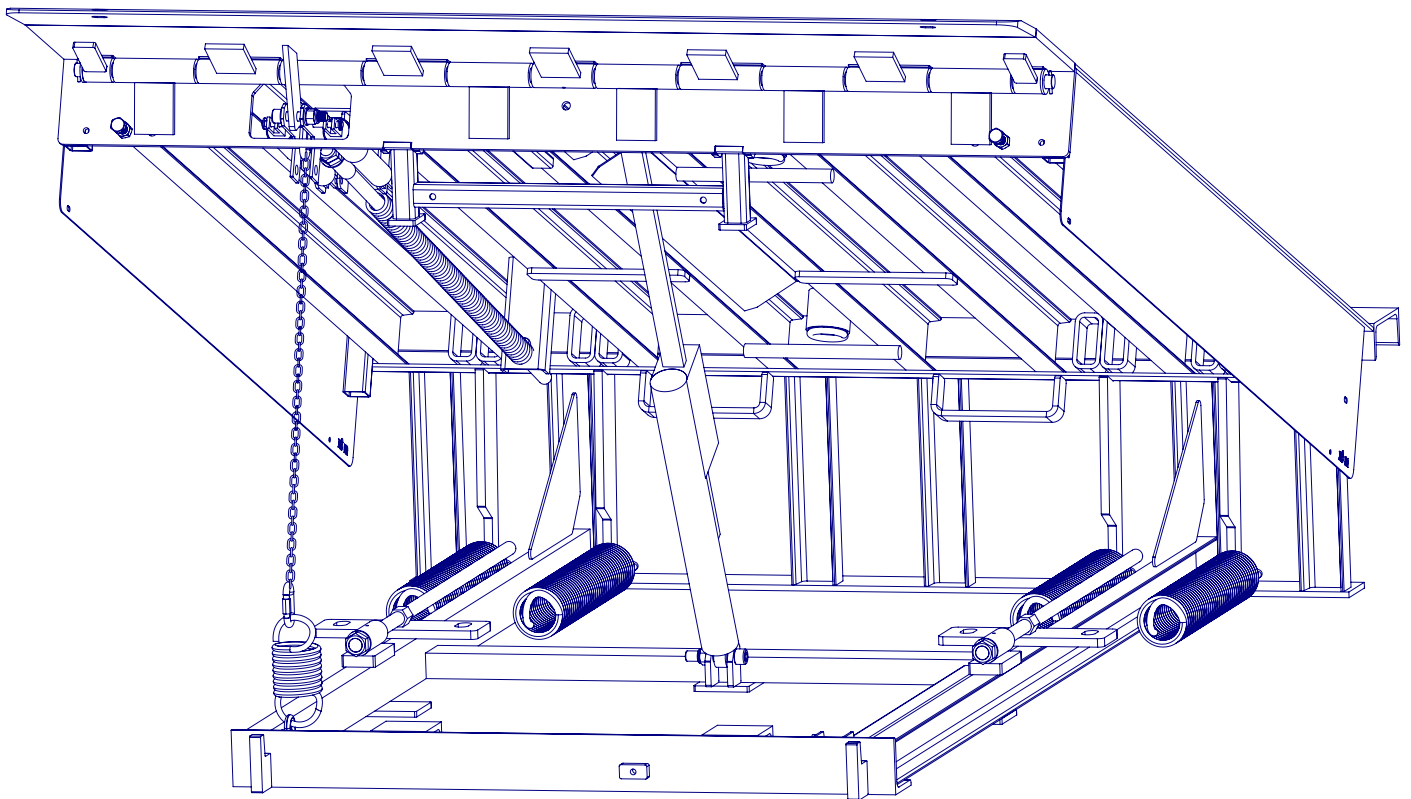


OWNER'S / USER'S MANUAL

MECHANICAL DOCK LEVELER



1. PRECAUTIONS

1.1 Identify Safety Information	02
1.2 General Operational Precautions	02
1.3 Safety Decals	03
1.4 Operating Instructions	04
1.5 Owner's/User's Responsibilities	05

2. INTRODUCTION

2.1 General Information	06
2.2 Component Identification	07

3. INSTALLATION

3.1 Installation Precautions	08
3.2 Prepare Pit	10
3.3 Pre installation check list	11
3.4 Prepare Dock Leveler	11
3.5 Install Dock Leveler	14

4. OPERATION

4.1 Operational Precautions	16
4.2 Instructions of Use the Dock	17

5. MAINTENANCE

5.1 Maintenance Precautions	19
5.2 Periodic Maintenance	20

6. TROUBLESHOOTING

6.1 Troubleshooting	22
---------------------	----

7. PARTS

7.1 Frame Components	24
7.2 Platform Components	26

8. WARRANTY

7.1 Warranty	29
--------------	----

9. OTHER

9.1 Other Operational Precautions	30
-----------------------------------	----

1.1 IDENTIFY SAFETY INFORMATION.



Risk of severe injury or death. Adhere to the instructions outlined in the safety information panel.



A critical hazard or risky situation that poses a high probability of causing fatal injuries or significant harm.



A major risk or dangerous act that may result in severe injury or loss of life.



A potential risk or unsafe practice that might lead to mild or moderate injuries.



Provides essential information unrelated to hazards, intended to avoid damage to equipment or property.



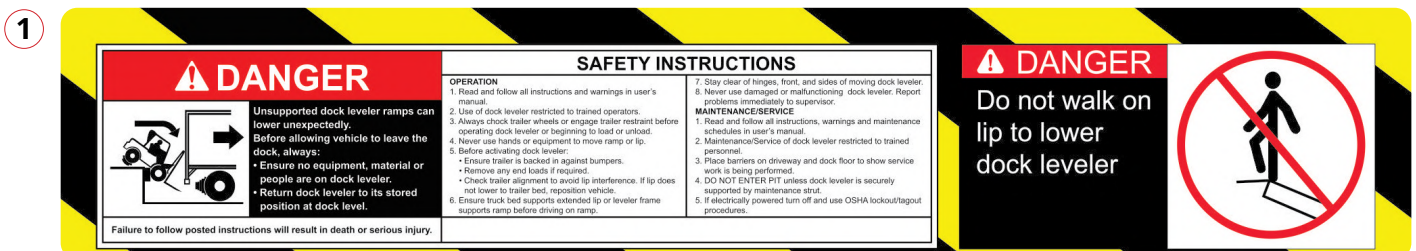
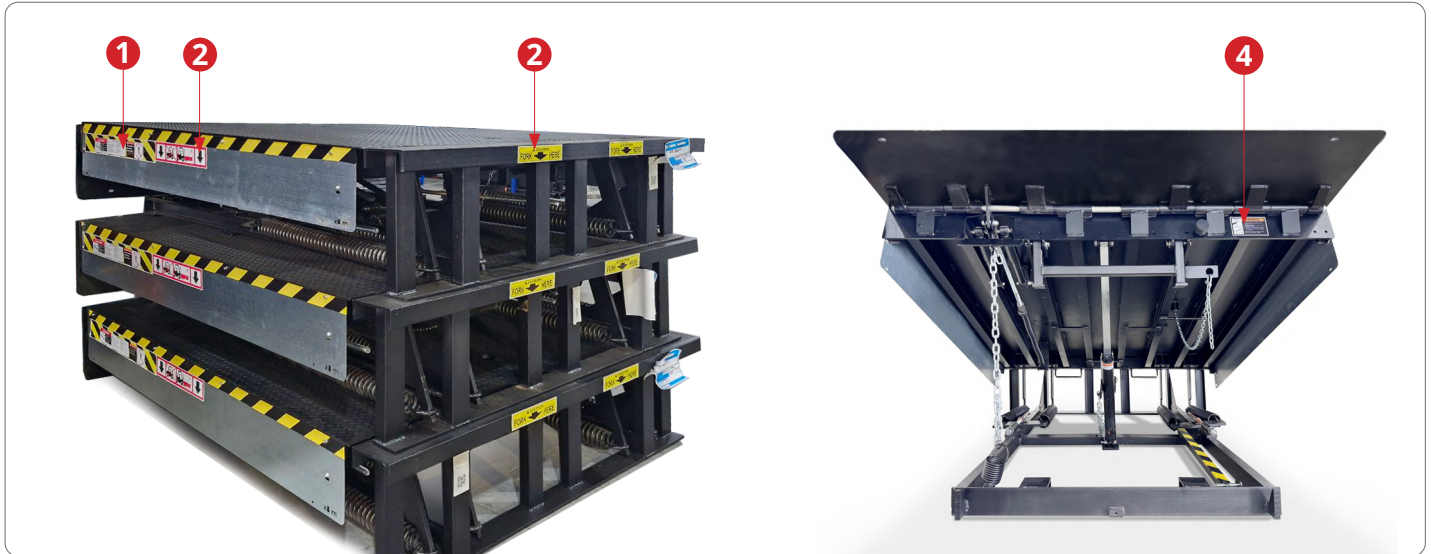
Sort of safety sign, or an accompanying panel, that provides detailed instructions or guidelines related to safety measures.

1.2 GENERAL OPERATIONAL PRECAUTIONS

- Do not take off Safety Information Labels from the equipment except when they have to be substituted.
- Always maintain the work area clear of any barrier to avoid stumbling or falling. Ensure the operating area is free of any instruments or debris before powering up the equipment.
- Do not use the dock leveler if any protective feature or barrier is absent or detached.
- Make sure all unauthorized individuals in the area are notified and have left the operating zone before activating the equipment.
- Thoroughly review and completely comprehend this document, and get acquainted with the equipment and its settings before operating the dock leveler.

1. PRECAUTIONS

1.3 SAFETY DECALS



1.4 OPERATING PRECAUTIONS



DANGER

- Carefully review and adhere to all instructions, safety warnings, and maintenance schedules found in the manual and on signs.
- Only trained and authorized personnel are permitted to operate and maintain the dock leveler.
- Before using the dock leveler or starting loading or unloading activities, always ensure the transport vehicle's wheels are properly secured with wheel chocks or by engaging the vehicle restraint system. Set the parking brake as well.
- Before activating the dock leveler, verify that the vehicle is properly aligned with the dock bumpers. Confirm that the lip will not contact the vehicle's frame, sides, or cargo during operation. If contact is expected or occurs, reposition the vehicle.
- Make sure the extended lip is supported by the transport vehicle's floor, or that the leveler frame (lip keepers or below-dock endload supports) holds the platform before driving on it.
- Keep clear of the moving leveler, especially near the hinges, front, and sides.
- Do not use your hands or any tools to move the ramp or lip.
- Never operate a dock leveler that is damaged or not functioning properly. Report any issues immediately to your supervisor.
- Always ensure the dock leveler is stored properly and clear the ramp of people, materials, and equipment before the vehicle departs from the dock.
- Do not enter the pit unless the dock leveler is securely supported and lockout/tagout procedures are in place. Refer to "Maintenance Safety" in the Owner's/User's Manual.

Failure to comply with these safety guidelines can lead to death or severe injury.

1.5 OWNER'S RESPONSABILITIES

- **The owner must recognize the inherent risks** of using the Mechanical Dock Leveler during operations of use and maintenance. The buyer must instruct and train their operators to safely use the dock equipment and accessories according to the manufacturer's recommendations.
- **The owner must become thoroughly familiar** with the following procedures and specifications, and immediately request replacements for faulty or worn components, or request new instructions if the originals are illegible:
 - » Installation instructions
 - » Operating instructions
 - » Planned maintenance procedures
 - » Inspection procedures
 - » Spare parts listsUpon receiving any newly purchased equipment, the owner must verify the presence of the "handbook," which should be easily accessible and readable to ensure the safe and efficient use of the equipment.
- **The buyer must ensure** that all identification plates, instructions, and safety warnings are always visible to users and maintenance staff.
- **It is mandatory to follow** the inspection procedures specified by the manufacturer and maintain written records of these inspections in compliance with warranty requirements.
- **If the Mechanical Dock Leveller has been structurally damaged** or subjected to unintended use, as per the manufacturer's guidelines, its use must be prohibited until the manufacturer or an authorized dealer performs an inspection and completes any necessary repairs.
- **Modifications or alterations** to the Mechanical Dock Leveller may be made only with prior written permission from the manufacturer. These changes must comply with all safety recommendations provided by Alapont Soluciones Logísticas.
- **The owner or authorized personnel** must verify that all safety requirements for the dock leveller have been met before it is put into use.
- **Unless otherwise agreed in writing** at the time of purchase with Alapont Logistics USA, all Mechanical Dock Levellers are sold as complete units. Altering or modifying them without prior written permission from the manufacturer or an authorized representative is strictly prohibited.
- **If the owner requests that Alapont Logistic Solutions does not supply** all or some components of the Mechanical Dock Leveler, the buyer assumes responsibility for all operational and safety concerns related to the resulting configuration of the delivered equipment.

2.1 GENERAL INFORMATION

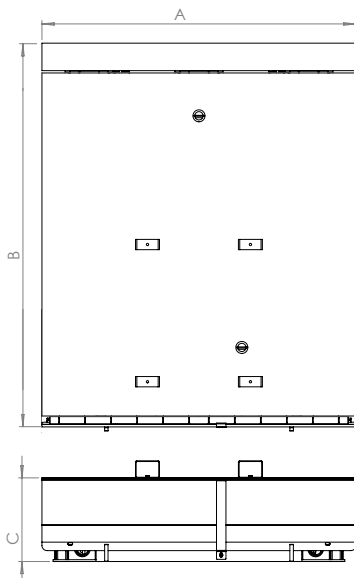
This manual provides information on the The Alapont Logistics Solutions Mechanical Dock Leveler. is characterised by its strength and safety. It's the fast, economical and easy way to bridge the gap between the building and the back of the truck bed. It has a hinged lip that allows the lip to adapt perfectly to the truck. It is adaptable to the space of the existing dock and easy to use.



OPTIONS AVAILABLE

- Steel Faced Dock Bumpers.
- 6" Thick Dock Bumpers.
- Vertical Bumpers.
- Dock Lights.
- Lip Keeper.
- Safety Wheel chocks.
- Available lip size: 16", 18", 20".
- Available lip typology options:
 1. Chamfer: The lip narrows towards the tip.
 2. Segmented lip: The lip is segmented into multiple parts to adapt to the width of the different vehicles being operated.
- Other finishing options:
 - Lacquered:
 - Gray RAL 7011
 - Blue RAL 5010
 - Stainless steel.
 - Hot dip galvanized.
 - Zinc powder primer:
 - Black RAL 9005
 - Gray RAL 7011
 - Blue RAL 5010

STANDAR MEASURES AND CAPACITIES



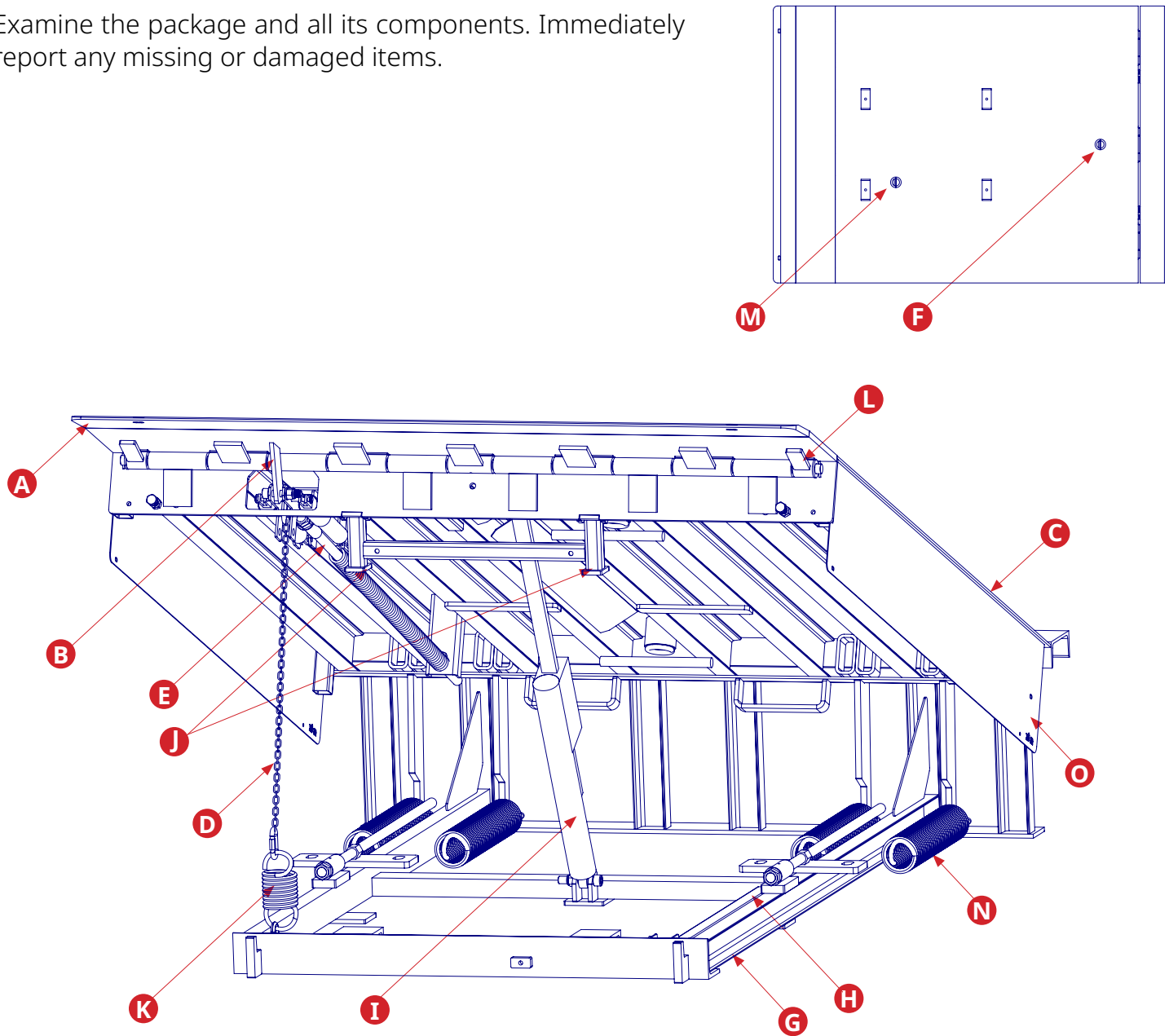
MODEL	DIM A	DIM B	DIM C	MAX RANGE	MIN RANGE
KM66	6 ft (72")	6 ft (64")	19"	10"	10"
KM68	6 ft (72")	8 ft (88")	19"	12"	12"
KM76	7 ft (83")	6 ft (64")	19"	10"	10"
KM78	7 ft (83")	8 ft (88")	19"	12"	12"

STANDARD CAPACITIES

	30.000 Lbs
U	45.000 Lbs
	60.000 Lbs

2.2 COMPONENT IDENTIFICATION

Examine the package and all its components. Immediately report any missing or damaged items.



A	Lip	F	Platform Release Ring	K	Lip Spring
B	Lip Maintenance Prop	G	Main Frame	L	Lip Hinge
C	Platform	H	Platform Maintenance Prop	M	Safety Leg Pull Ring
D	Lip Link	I	Hold-Down Mechanism	N	Lift (Main) Spring Assembly
E	Lip Assist Rod	J	Safety Leg	O	Safety Baseboards

3.1 INSTALLATION PRECAUTIONS



DANGER - Risk of serious injury or death.

- **Never operate or attempt to move the dock leveler without first ensuring that there are no people or objects beneath it.** Failure to do so could result in crushing, causing severe injury or death.
- **DO NOT** perform any maintenance or adjustment without first installing the safety support bar.
- Before starting any maintenance or adjustment task:
 - Fully raise the dock leveler to its highest position.
 - Always secure the dock platform and lip with extra support whenever performing work in front of or beneath the dock leveler.



WARNING

- **Keep a safe distance from the dock while it is in operation** to avoid any potential collisions.
- **Install warning beacons and clearly signal the dock** to prevent its use before maintenance or adjustments are completed.
- **Do not use or walk on the dock until you have confirmed that the truck is properly positioned, fully braked, and that its suspension system has stabilized.**
- **Never attempt to raise the dock using auxiliary equipment.**
- **Always verify that the working area is safe** in accordance with the manufacturer's instructions before proceeding with any tasks.
- **Avoid staying under the dock's extension for extended periods** to reduce the risk of injury. A
- If any uncontained **hydraulic fluid** or **flammable substances** are present, do not begin **grinding** or **welding**, as sparks can ignite nearby spills or leaks.
- Keep an appropriate **fire extinguisher** close by whenever **grinding** or **welding** is in progress for safety.
- Wear a hard hat or **appropriate head protection** when working beneath or near a dock leveler to ensure safety.



CAUTION

- **Only authorized and properly trained personnel are permitted to operate this equipment.**
- **Do not use or walk on the dock** until you have verified that the truck is correctly positioned, fully braked, and its suspension system has stabilized.
- **Always return the dock to its vertical resting position** after use to ensure safety and proper storage.
- **Failure to perform regular maintenance can lead to serious accidents and equipment damage.** Ensure that all scheduled maintenance tasks are completed.
- **If any malfunction is detected, stop using the equipment immediately and contact the manufacturer** for assistance or repairs.

NOTICE

- **If welding is required on the dock, do not connect the ground clamp to the hydraulic cylinder, electrical control panel, or any electrical components.** Always use the base of the dock as the grounding point.
- **When drilling the metal enclosure of the electrical control panel, ensure that metal shavings do not fall onto the electrical components,** as this could cause damage to the panel.
- **Use a vacuum cleaner to remove all metallic debris** after drilling or maintenance work.
- **Ensure that all components of the dock move freely without interference** when the equipment is in operation.
- **If you have any questions or concerns, contact the manufacturer, ALAPONT LOGISTIC SOLUTIONS** at (786) 575 - 4012 or reach out to an authorized dealer.

3.2 PREPARE PIT

Before installing the dock, a pit must be constructed to accommodate it:

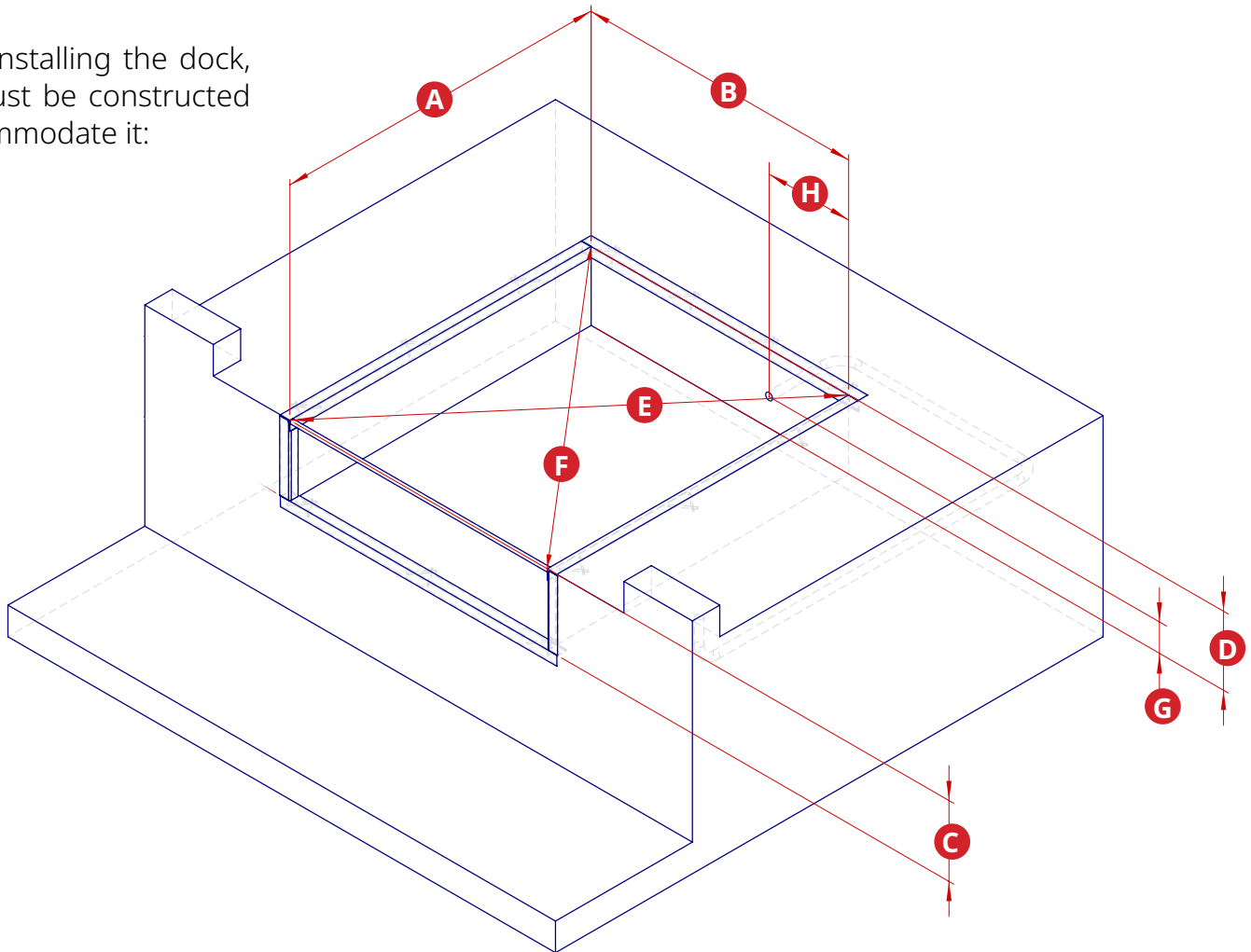


Table including parts and the dimensions of the gap according to the supplied dock:

A	Pit Length
B	Pit Width
C	Front Depth
D	Rear Depth
E	Diagonal 1
F	Diagonal 2
G	J-Box Vertical
H	J-Box Horizontal

MODEL	DOCK MEASURES	A	B	C	D	E	F	G	H
KM66	6'x6' (72" x 64" x 19")	63"	74"	20"	19"	96"	96"	7 1/4"	28 3/4"
KM68	6'x8' (72" x 88" x 19")	87"	74"	20"	19"	114"	114"	7 1/4"	28 3/4"
KM76	7'x6' (83" x 64" x 19")	63"	85"	20"	19"	105"	105"	7 1/4"	28 3/4"
KM78	7'x8' (83" x 88" x 19")	87"	85"	20"	19"	121"	121"	7 1/4"	28 3/4"

3.3 PRE-INSTALLATION CHECKLIST

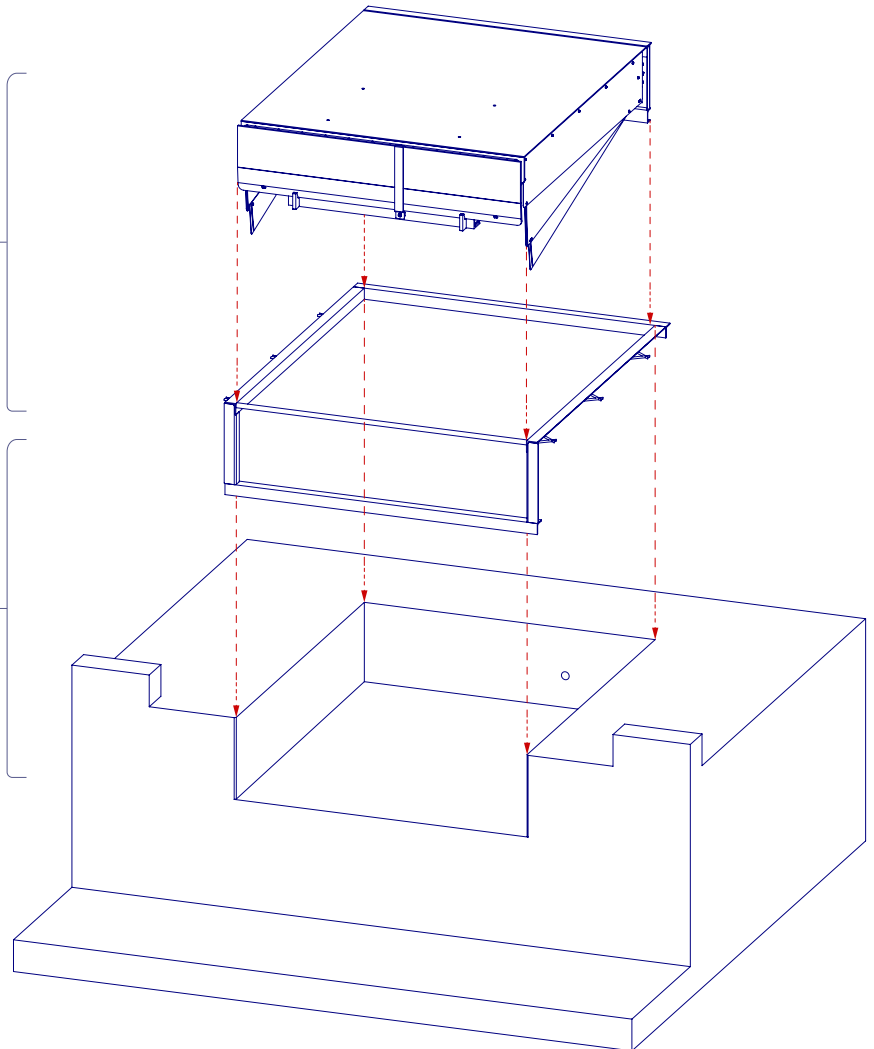
Before lowering the dock leveler into the pit, ensure the following steps are completed:

1. **Clear the pit of all debris** and sweep it clean to prepare for installation.
2. **Inspect the entire dock leveler pit** to confirm it has been constructed according to the approved pit design drawings. Ensure the pit is properly aligned by taking the following measurements:
 - **Measure the width of the pit** at both the front and rear (refer to the diagram).
 - **Measure the depth** from the dock floor to the pit floor at all four corners.
 - **Measure the length** of the pit along both sides.
 - **Measure the diagonal distances** (corner-to-corner) at both sides.
3. If any measurement deviates by more than 1/8 inch (3.2 mm), contact your technical support team for further assistance before continuing with the installation

3.4 PREPARE DOCK LEVELER

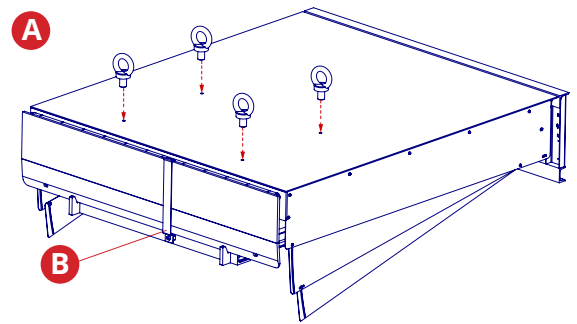
STEP 2. Install the Dock Leveler.

STEP 1. Place the frame.



3. INSTALLATION

Alapont Dock levelers are shipped with lifting brackets (A) secured to the platform and shipping bands (B) placed around the platform lip and leveler frame (refer to diagram).



1. **Remove any bumpers or control panels that may be banded to the dock leveler frame.**

NOTICE

Do not remove the shipping bands at this stage. They are necessary to keep the leveler stable during the installation process.

Note: Ensure the overall width of the platform and lifting brackets is minimized to avoid interference between the brackets and pit walls when lowering the dock leveler into the pit.

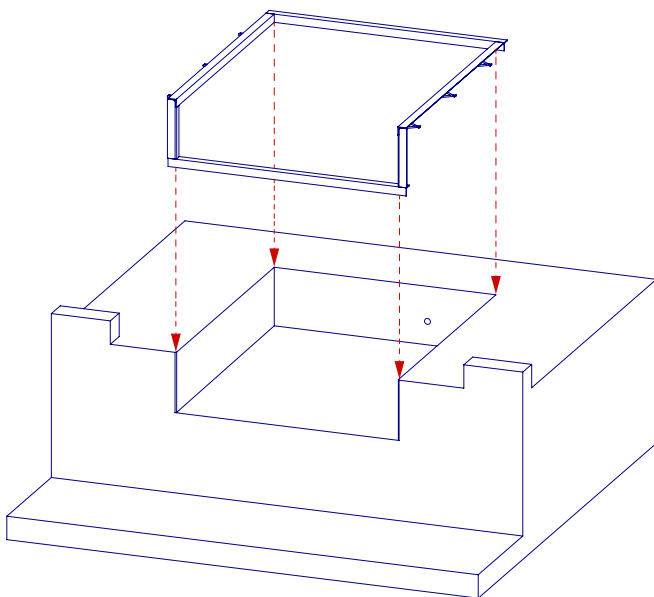
2. **Check that the lifting bracket hardware is tight enough to hold the brackets securely, but still allows them to pivot without restriction on the mounting cap screw.**

NOTICE

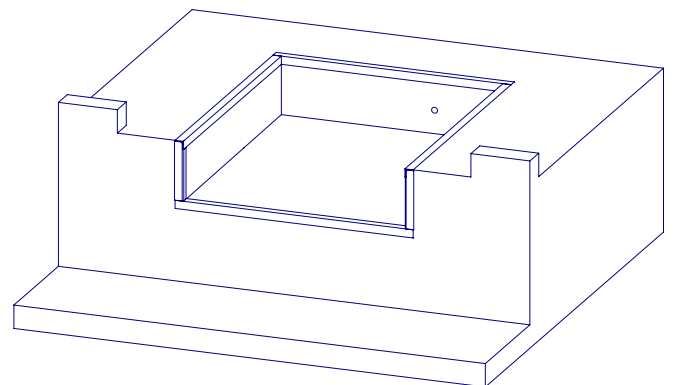
Avoid over-tightening the hardware, this may damage the weather seal

3. **Attach lifting chains to the brackets and connect them to a lifting device (such as a hoist or forklift) with the appropriate lifting capacity and reach.**
4. **Remove any wood blocks fastened to the leveler frame before lowering the dock leveler into the pit.**

STEP 1. Place the frame.



Note: when handling the Standard Dock Leveller the law on the Prevention of Labour Risks, as well as the regulations on safety and health in the workplace have to be accomplished at all times.

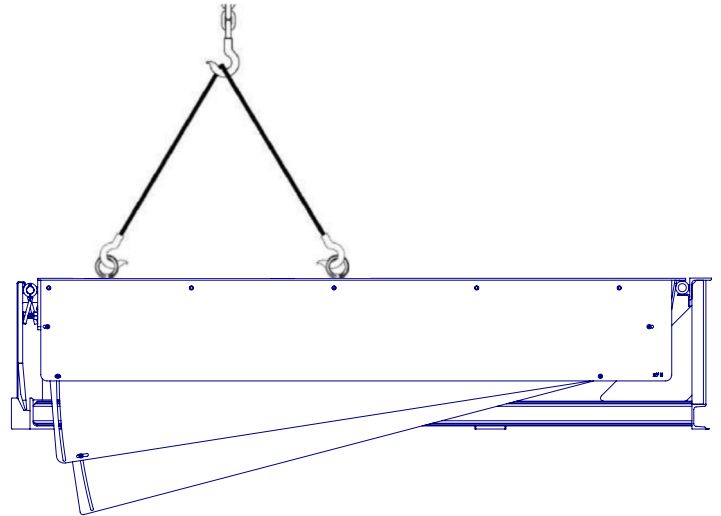
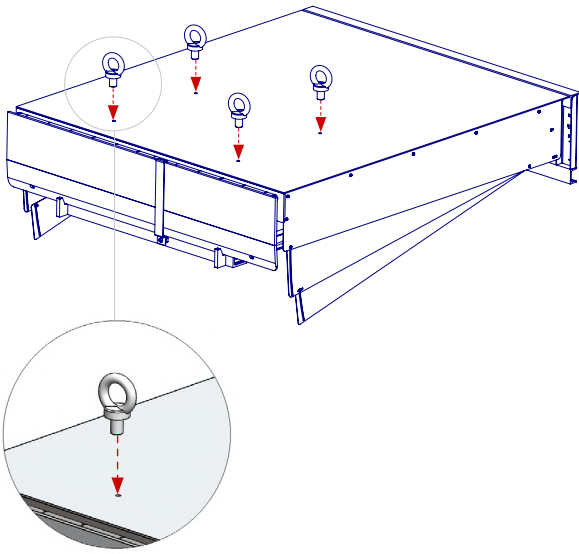


3. INSTALLATION

STEP 2. Install the Dock Leveler.

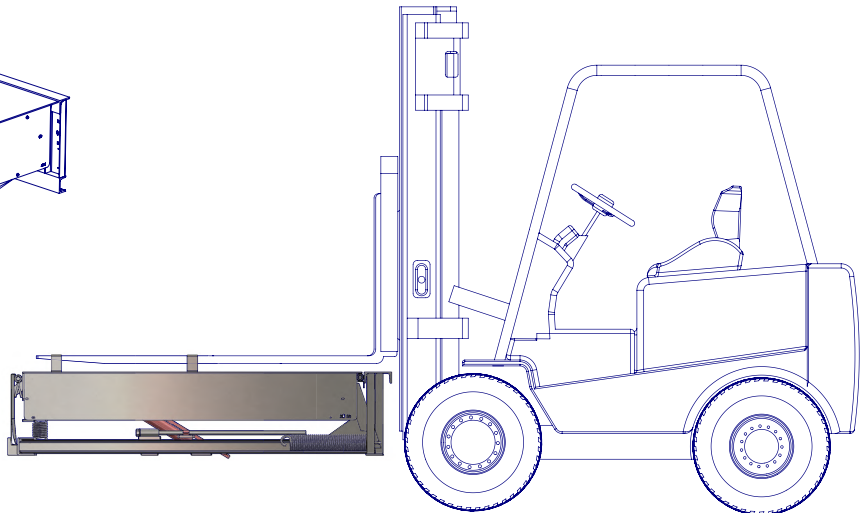
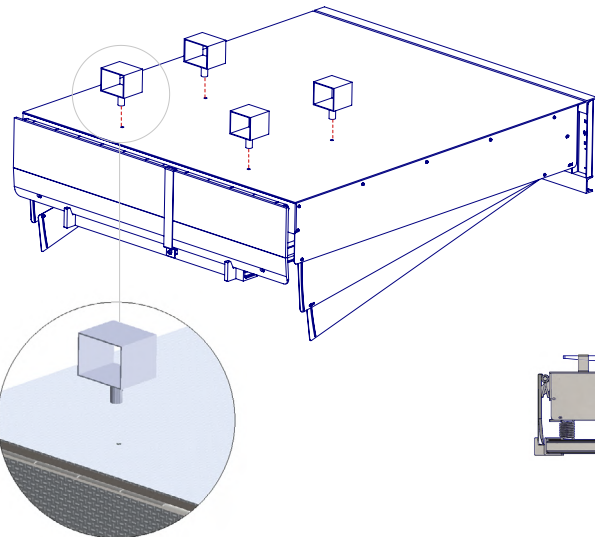
OPTION 1

To install the hydraulic dock leveler, insert four M12 eyebolts into the designated holes on the platform. Using chains, slings, or a similar lifting device, carefully lift and position the dock leveler into place.



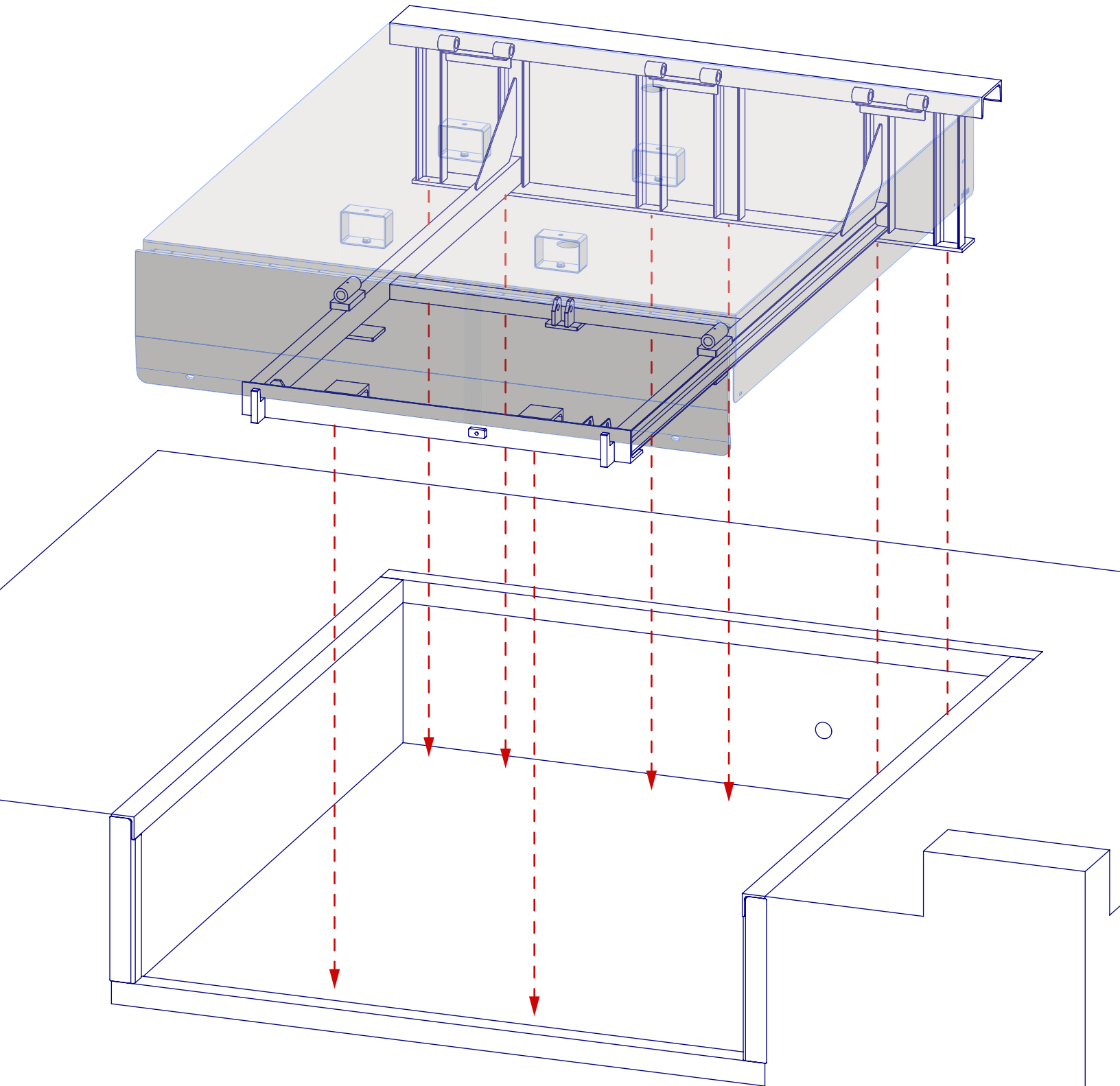
OPTION 2

As an alternative method to install the Standard Dock into the pit, insert four square tube clamps into the designated holes. Each clamp consists of a 4.7 x 4.7-inch square tube with a 0.47 x 1.38-inch hexagonal bolt welded at the base. Using a forklift, securely lift and position the Standard Dock leveler into the pit for installation.



3. INSTALLATION

3.5 INSTALL DOCK LEVELER

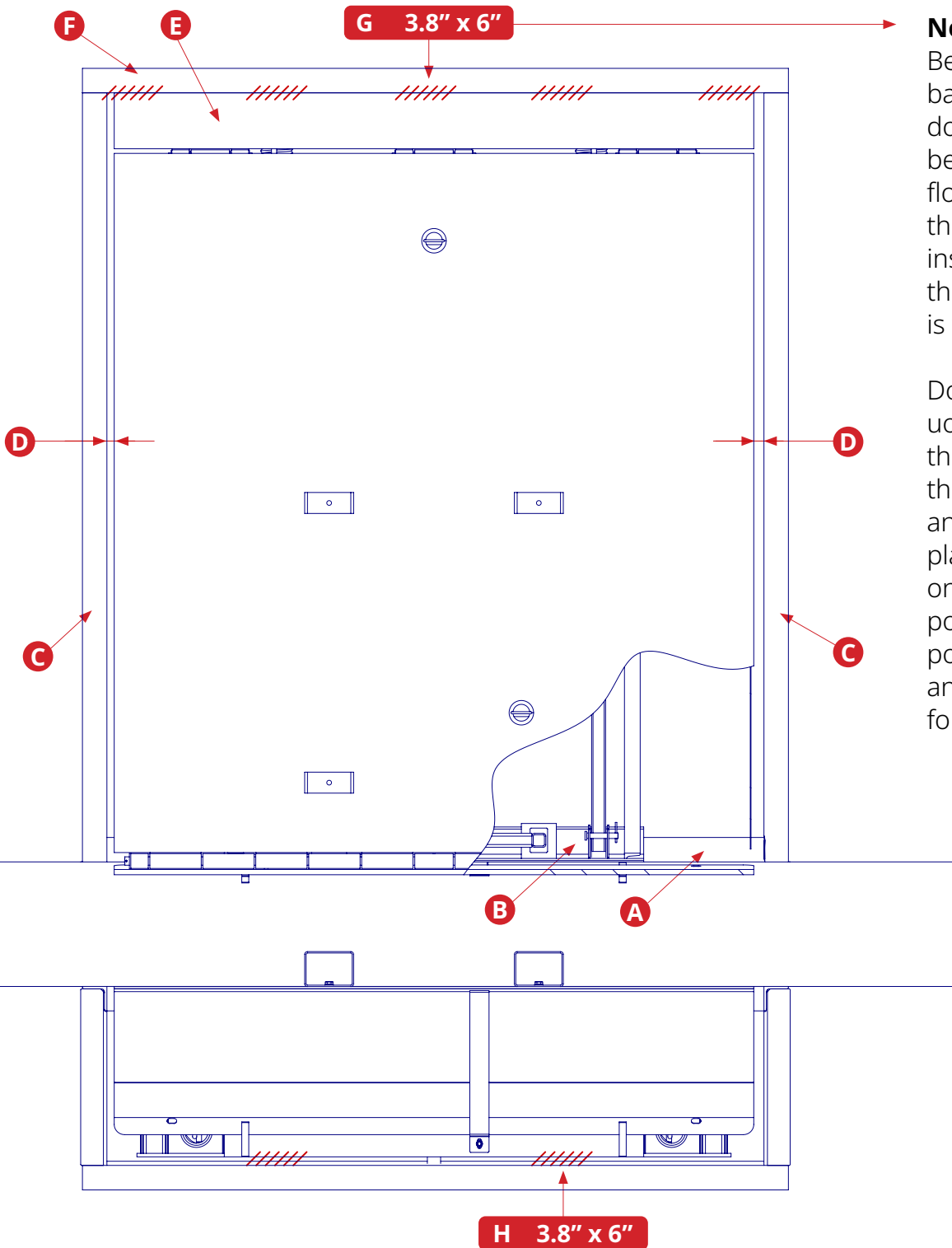


3. INSTALLATION

Note:

Before welding the back section, the dock leveler must be aligned with the floor and stabilized. If the pit is uneven, the installer should shim the dock leveler until it is flush with the floor.

Do not apply continuous welding along the entire length of the rear hinge frame angle. Doing so can place undue stress on the leveler components, leading to potential malfunctions and a shorter lifespan for these parts.



A	Front of Dock Pit	D	Gap: 3/4" Minimum	G	Welding Zone
B	Dock Leveler Frame	E	Rear Hinge Frame Angle	H	Welding Zone
C	Side Pit Curb Angle	F	Rear Pit Curb Angle		

4.1 OPERATIONAL PRECAUTIONS



DANGER - Risk of crushing

- **Ensure the dock leveler and vehicle restraint areas are clear** when vehicles are entering or exiting the dock zone.
- **Do not operate or adjust** the dock leveler or restraint **if anyone is positioned underneath or in front** of the leveler.
- Keep **hands, feet, and other body** parts **away** from pinch points and moving components.



WARNING

- **Only personnel with proper training** should operate the dock leveler.
- **Do not use** the dock leveler if it is **damaged or in need of repair**.
- **Verify** that the dock leveler has undergone **appropriate service and maintenance** checks before operation.
- **Transport vehicle wheels** must be secured with **chocks** unless a vehicle restraint system is in place. **Do not remove wheel chocks until loading or unloading is complete** and the driver has clearance to depart.
- **Ensure** that **the platform lip overlaps the bed** of the transport vehicle by at least **4 inches (100 mm)**.
- **Keep a safe distance from the side edges** of the dock leveler while loading or unloading.
- The Alapont Logistic Solutions hydraulic dock leveler is designed to adjust for a height difference of up to ± 12 inches (305 mm) between the dock floor and the transport vehicle bed. **Do not use the dock leveler if the vehicle bed height exceeds this 12" (305 mm) range above or below the dock floor.** Note: Service height may vary based on specific design parameters.
- **Avoid overloading the dock leveler beyond its capacity.**
- **Never operate equipment while under the influence of alcohol or drugs.**
- **Do not leave equipment or materials unattended** on the dock leveler.

4.2 INSTRUCTIONS OF USE THE DOCK

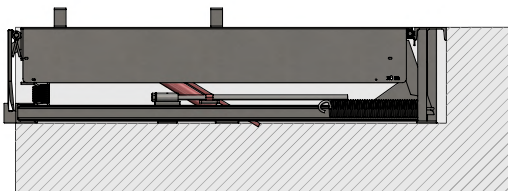
Loading and Unloading Operation Process

Note:

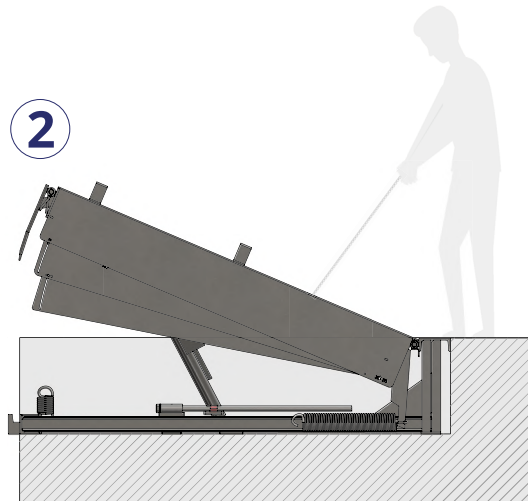
Before starting the loading and unloading process, the dock leveler must be in its resting position

1. **Position the vehicle so it is properly aligned** between the two bumpers of the dock leveler.
2. **Engage the vehicle restraint system if available.** If not, inform the driver to use the vehicle's own restraint system. It is essential to secure the vehicle to prevent accidents during the loading and unloading process.
3. **Ensure there are no obstacles** that could interfere with the upward movement of the dock leveler.
4. **Once the area is secure, pull the chain lever to raise the ramp.** This action will open the ramp and the lip. Then, walk on the ramp to lower it and rest it on the vehicle. The lip is equipped with two pneumatic pistons to slow down the descent.

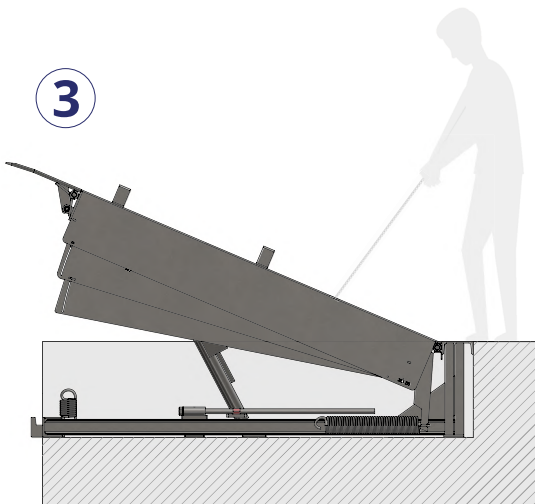
1



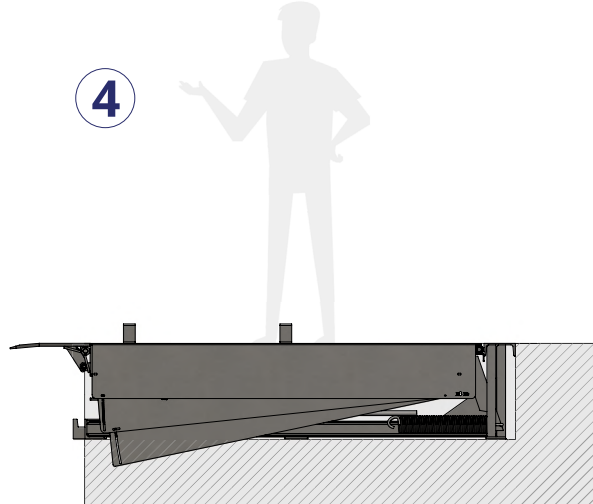
2



3



4



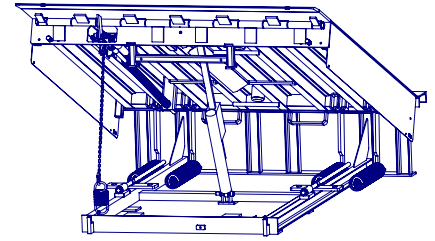
5. **Verify that the ramp is properly aligned with the vehicle.** The lip should rest at least 4 inches of its surface on the vehicle and be aligned along the entire contact surface.
6. **Once the ramp is correctly positioned, you can begin loading and unloading operations.**
7. **When the loading and unloading process is complete,** before moving the vehicle, **check the area under the dock leveler for any objects** that could obstruct its descent.
8. **After securing the area, pull the chain lever again. The ramp will rise, and the lip will begin to lower gradually.** Once the lip reaches its resting position, step onto the ramp to return it to its resting position.
9. **When the dock leveler is in its resting position, the vehicle can be removed from the area.**

Note:

10. The manufacturer recommends driving at a speed between 1 and 3 mph when operating electric trucks on the dock leveler, braking before arriving at or departing from the leveler.

5.1. MAINTENANCE PRECAUTIONS

This document includes essential maintenance, routine inspections, adequate lubrication, and fastening checks to ensure optimal performance and long-lasting operation of the loading dock over the years.



For any maintenance work underneath the dock leveler platform, secure the platform with the maintenance prop. Only the technician performing maintenance should have the authority to remove the lockout devices.



DANGER - Risk of crushing

Two individuals are necessary for setting up the maintenance prop: one person operates the machinery while the other ensures the prop is properly secured in position.



WARNING

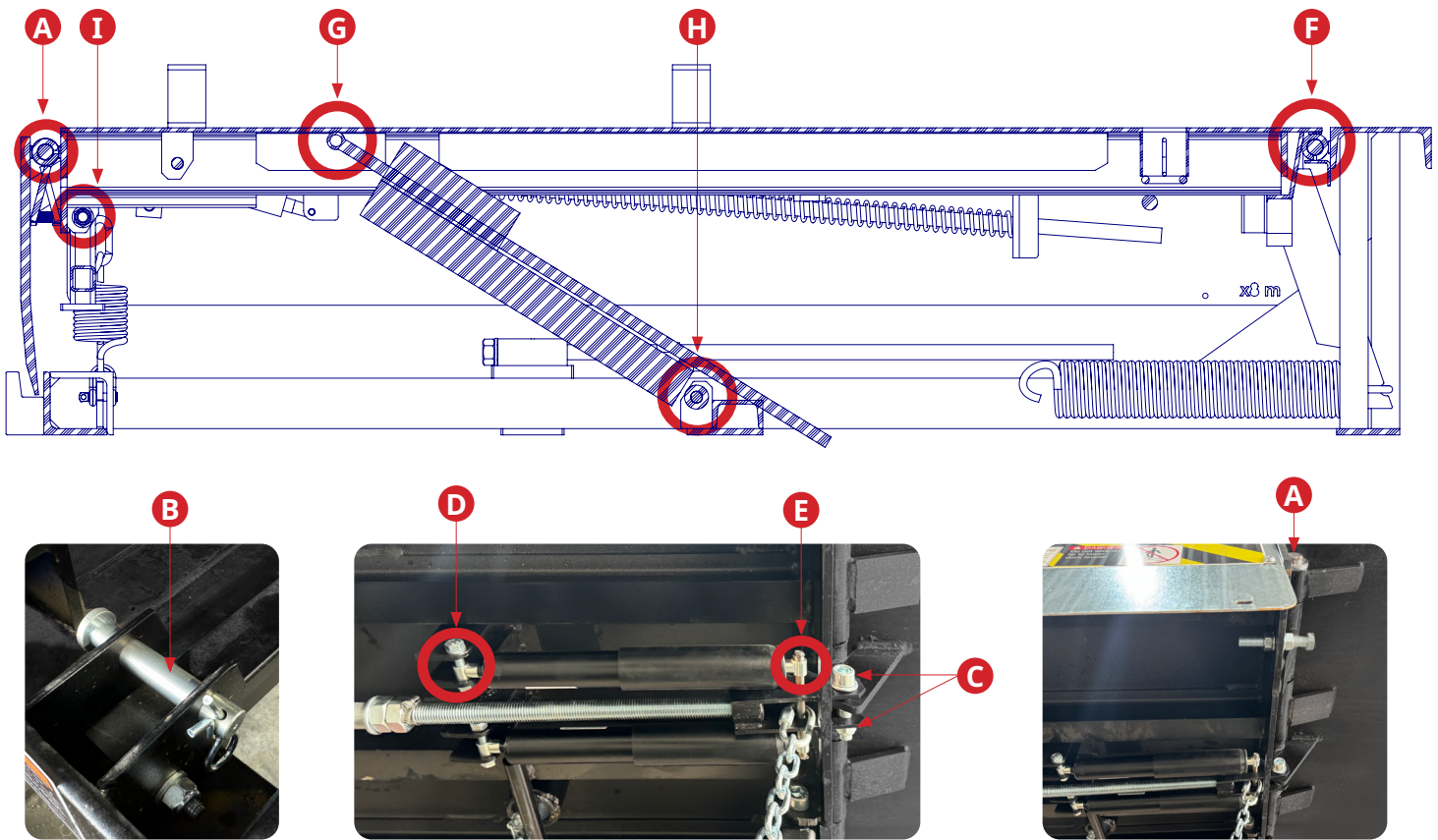
Safety warnings should be clearly visible, and physical barriers must be placed around the worksite, both on the dock and at ground level, to prevent any unauthorized use of the equipment until all maintenance tasks are finished.

Protective headgear, such as a hard hat, must always be worn when working under or near a dock leveler. Be sure to maintain a safe clearance from the platform lip while conducting work in front of the dock leveler.

5.2 PERIODIC MAINTENANCE

WEEKLY MAINTENANCE		YES	NO
Remove waste that there might be on the dock or at the working area.			
Make sure that the hinge is completely clean.			
Run the dock leveler through its full operating cycle to ensure proper lubrication.			
Check all warning decals and placards, and replace any that are damaged or missing.			
QUARTERLY MAINTENANCE		YES	NO
Perform the daily maintenance.			
Ensure that the toe guards move freely.			
Inspect any weather seal			
Tighten nuts & bolts			
Examine all welds for any signs of cracks.			
Check the rear hinge.			
Inspect and lubricate cylinder pivots			
Examine the subframe.			
Review all electrical connections.			
Check bumpers for wear exceeding 1". Replace any worn, loose, damaged, or missing.			
Run the dock leveler through its full operating cycle to ensure proper operation.			
Lubricate all the points indicated in page 25			
YEARLY MAINTENANCE		YES	NO
Perform the recommended maintenance every 90 and 180 days.			
Remove waste that there might be on the dock or at the working area.			

Lubrication points



A	Lip Hinge Area: Apply oil to the lip hinge area unless it has grease fittings. When the platform is fully lowered below dock level with the lip folded, oil the entire length of the lip hinge from the top.
B	Pivot mechanism for the lip maintenance prop
C	Pivots for the lip linkage system
D	Lip Cylinder to Platform Pin
E	Lip Cylinder to Lip Pin
F	Platform Hinge Area: Apply oil to top of all platform hinges when platform is at the full below-dock position
G	Hold down to platform pin
H	Hold down to frame pin
I	Safety leg linkage pivots

6.1 TROUBLESHOOTING

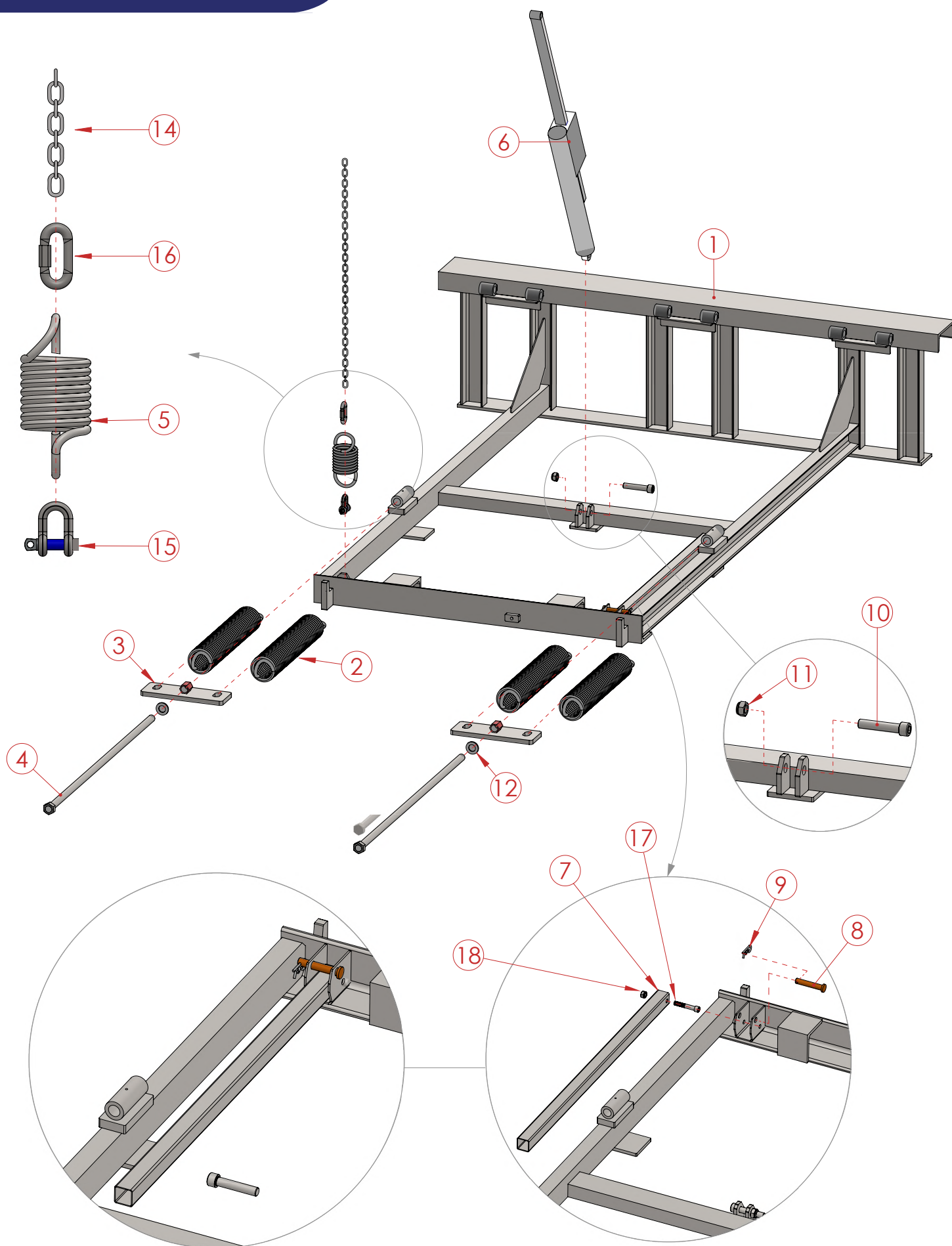
PROBLEM	POSSIBLE REASON
The loading dock does not operate with the activation handle	<ol style="list-style-type: none"> 1. Check for any obstacles that may be interrupting the lifting movement of the loading dock. 2. Verify that the chain is not broken. 3. Ensure the chain is not caught or snagged. 4. Check that the hold-down mechanism is not engaged or stuck.
The ramp does not fully raise	<p>Note: To ensure the ramp completes its full lifting motion, keep the activation handle pulled until the ramp is fully raised.</p> <ol style="list-style-type: none"> 1. Verify that the loading dock is securely attached to the pit. 2. Check for any obstacles that may be interrupting the ramp's lifting movement. 3. Ensure that the ramp's movement axis is in good condition and not under strain; lubricate if necessary. 4. Check if any springs are loose or broken. 5. Make sure the brake chain attached to the spring on the front lower section is not overly tight when the ramp is fully raised; increase its length if needed. 6. If none of these resolve the issue, adjust the tension of the four lifting springs on the ramp using the tension screws available on each pair of springs. 7. If the tension is still insufficient, the springs may have reached the end of their useful life.
The lip does not fully raise	<p>Note: For the lip to fully raise, the loading dock spring must be properly adjusted, as described above.</p> <ol style="list-style-type: none"> 1. Verify that the loading dock is securely attached to the pit. 2. Check for any obstacles that may be interrupting the lip's lifting movement. 3. Ensure that the lip's movement axis is in good condition and not under strain; lubricate if necessary. 4. Check if the spring is loose or broken. 5. Inspect the pneumatic dampers of the lip to ensure they are in good condition and not blocked. 6. If none of these resolve the issue, adjust the lip's lifting spring tension using the spring adjustment nut and locknut. 7. There is another adjustment for the lip's lifting force; reduce the length of the brake chain attached to the spring on the front lower section. 8. If the tension is still insufficient, the spring may have reached the end of its useful life.

6.1 TROUBLESHOOTING

PROBLEM	POSIBLE REASON
The loading dock does not operate with the activation handle	<ol style="list-style-type: none"> 1. Check for any obstacles that may be interrupting the lifting movement of the loading dock. 2. Verify that the chain is not broken. 3. Ensure the chain is not caught or snagged. 4. Check that the hold-down mechanism is not engaged or stuck.
The ramp does not lower completely or does not sit flush with the vehicle	<ol style="list-style-type: none"> 1. Check for any obstacles that may be interrupting the ramp's lowering movement. 2. Verify that the activation chain of the hold-down mechanism is not stretched or caught. 3. Ensure that the hold-down lever chain is not excessively tight. 4. If none of these resolve the issue, it may be due to excessive tension in the ramp springs, causing the hold-down lock teeth to separate. 5. If the issue persists, inspect the hold-down lock teeth and visually check the physical condition of the hold-down mechanism for any signs of impact, breakage, or wear.
The ramp operates without using the activation handle	<ol style="list-style-type: none"> 1. Verify that the activation chain of the hold-down mechanism is not tight or caught. 2. Ensure that the hold-down lever chain is not excessively tight. 3. If none of these resolve the issue, it may be due to excessive tension in the ramp springs, causing the hold-down lock teeth to separate. 4. If the issue persists, inspect the hold-down lock teeth and visually check the physical condition of the hold-down mechanism for any signs of impact, breakage, or wear.
The ramp lifts with excessive force and lowers with difficulty	The springs are excessively tense; reduce the tension using the adjustment screws available on each pair of springs.
The lip raises with excessive force	<ol style="list-style-type: none"> 5. The spring is excessively tense; reduce the tension using the adjustment nut and locknut. 6. The brake chain attached to the spring on the front lower section is excessively tight; increase its length.
The lip lowers too quickly	Check the condition of the lip's pneumatic dampers and, if necessary, replace them.

7. PARTS

7.1 FRAME COMPONENTS

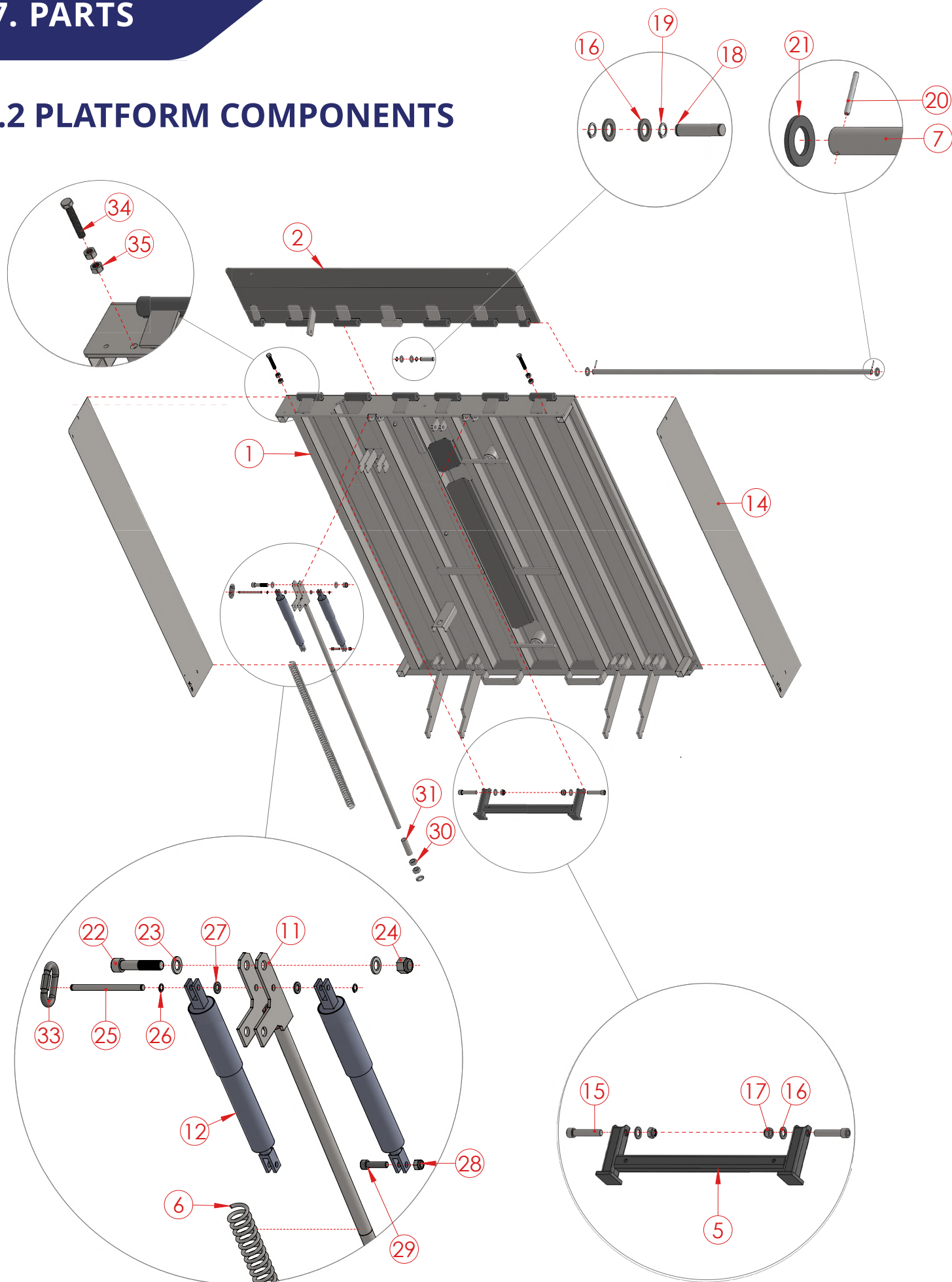


7.1 FRAME COMPONENTS

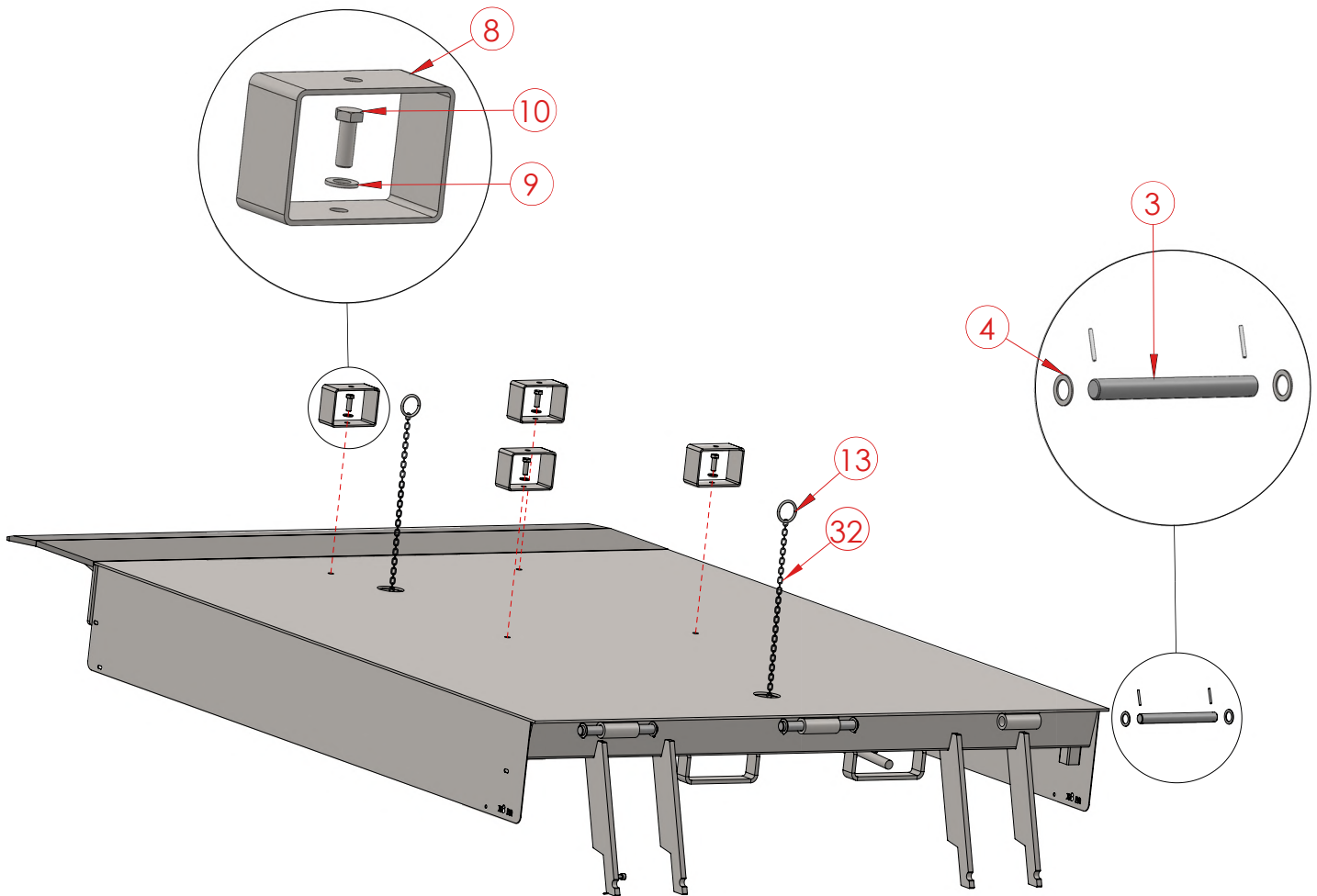
ITEM NO.	PART NO.	DESCRIPTION	QUANTITY
1	0201M0302100	Lower frame assembly 6' x 8' mechanical	1
2	0201M0202299	Compression spring mechanical ramp 6' x 8' and 7' x 8'	4
3	0201M0302212	Mechanical spring hook	2
4	0201M0202265	Tension rod	2
5	0201M0302270	Lower spring ramp lip mechanical 6' x 8' and 7' x 8'	1
6	91CO00000863	Mechanical ramp holdown	1
7	0201M0106115	Mechanical ramp safety mast	1
8	0106A0101306	VERTICAL SAFETY SPRING MAST SHAFT	1
9	91TO000000055	"R" PIN	1
10	91TO000000385	Screw DIN 912 M 18 x 90	1
11	91TO000000387	Nut DIN 985 M 18 ZN	1
12	91TO000000034	Flat washer DIN 125 D24 ZN	2
13	91MP000000016	ROUND TUBE 30 X 1.5 GALVA (M)	1
14	91TO000000451	GALVA CHAIN MTS DIN 5685 8MM	1
15	91TO000000453	RECTANGULAR GALVA SHACKLE 108 8MM 09523430	1
16	91TO000000454	OVAL QUICK-LINK CARABINER MRC ZINC 8	1
17	91TO000000069	TORNILLO DIN 912 M 12 X 70 ZN	1
18	91TO000000006	TUERCA DIN 985 M12 ZN	1

7. PARTS

7.2 PLATFORM COMPONENTS



8.2 PLATFORM COMPONENTS



ITEM NO.	PART NO.	DESCRIPTION	QUANTITY
1	0201M0302400	Upper 6 x 8 mechanical ramp	1
2	0201M0101320	Tip 6 x mechanical ramp	1
3	0106I0101303	VERTICAL SPRING SHAFT	3
4	0106A0101307	SPRING SHAFT WASHER	6
5	0201M0101495	Mechanical support leg assembly	1
6	0201M0202245	Compression spring wire 6 mm	1
7	0201A0301302	Round 24 mm	1
8	91PL00002235	Ramp load tube	4

8. PARTS

ITEM NO.	PART NO.	DESCRIPTION	QUANTITY
9	91TO00000097	FLAT WASHER DIN-125 D12 ZN	4
10	91TO00000376	Screw DIN 933 M 12 x 35 ZN	4
11	0201M0302420	Mechanical lip push bar assembly	1
12	91CO00000864	Gas shock absorber without sleeve	2
13	0201M0202276	Pull ring for mechanical ramp chain	2
14	0201M0302426	Side ramp x 8' mechanical -- pit 500 mm	2
15	91TO00000385	Screw DIN 912 M 18 x 90	2
16	91TO00000966	FLAT WASHER DIN 125 M18	4
17	91TO00000387	Nut DIN 985 M 18 ZN	2
18	0201M0202284	Upper holdown shaft	1
19	91TO00000388	SEEGERRING DIN 471 SHAFT 18 mm	2
20	91TO00000447	Elastic pin DIN 1481 - ISO 8752 - 4.5x40	8
21	91TO00000034	Flat washer DIN 125 D24 ZN	3
22	91TO00000030	SCREW DIN 912 M 16 X 80 ZN	1
23	91TO00000024	Flat washer DIN-125 D16 ZN	2
24	91TO00000023	Nut DIN 985 M16 ZN	1
25	0201M0202285	Upper holdown shaft	1
26	91TO00000389	SEEGERRING DIN 471 SHAFT 10 mm	2
27	91TO00000413	WASHER DIN 125 D10 ZN	2
28	91TO00000010	NUT DIN 985 M10 ZN	1
29	91TO00000390	SCREW DIN 912 M 10 X 40 ZN	1
30	91TO00000079	NUT DIN 934 M24 ZN	2
31	0201M0302406	Hollow round tube 30 x 1.5	1
32	91TO00000452	GALVANIZED CHAIN DIN 5685 3MM	2
33	91TO00000454	OVAL QUICK-LINK CARABINER MRC ZINC 8	1
34	91TO00000130	SCREW DIN 933 M 16 X 90 ZN	2
35	91TO00000141	NUT DIN 934 M16 ZN	4

10 YEAR ANSI STRUCTURAL WARRANTY

1. ALAPONT GLOBAL USA warrants that the **structures** (dock section, lip section, rear hinge, and front hinge) will not fail for a period of **10 years** from the date of shipment.
2. The **power source** (motor and pump unit) has a **1 year** warranty from the date of shipment.

This warranty shall not cover failure due to damage in transit, damage as a result of improper installation, usage in excess of stated capacity, usage outside the stated working range of the leveler, misuse, improper maintenance (or lack of a regular and timely maintenance plan), negligence, abuse, alteration or repairs not authorized by ALAPONT GLOBAL USA.

This warranty is not a replacement for regular maintenance or safe operating practice. Charges will not be accepted for normal adjustments and lubrication or consequential damage such as loss of use or rental charges.

In the event of any defects covered by this warranty, ALAPONT GLOBAL USA will remedy such defects by repairing or replacing any defective equipment or parts, bearing all the costs of the parts, labor, and transportation, or at ALAPONT GLOBAL USA option, refunding 100% of the original purchase price of the leveler excluding installation, freight, and taxes.

This warranty, together with ALAPONT GLOBAL USA standard warranty, are exclusive and constitute all of ALAPONT GLOBAL express warranties, and shall be the exclusive remedies for all claims, whether based on contract negligence or strict liability.

ALAPONT GLOBAL USA EXPRESSLY DISCLAIMS ALL IMPLIED WARRANTIES INCLUDING THE IMPLIED WARRANTIES OF MERCHANTABILITY AND FITNESS.

ALAPONT GLOBAL USA SHALL NOT IN ANY EVENT BE LIABLE FOR ANY LOSS OF THE USE OF ANY EQUIPMENT OR INCIDENTAL OR CONSEQUENTIAL DAMAGES OF ANY KIND.

9.3 OTHER OPERATIONAL PRECAUTIONS



WARNING

Make sure you are fully trained in the safe operation of this equipment:



If the vehicle's bed height is significantly above or below the dock, avoid using the dock leveler system.



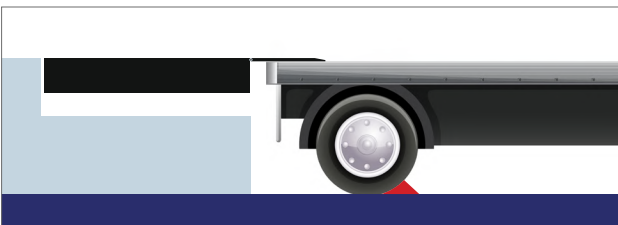
Avoid exceeding the recommended dock load capacity.



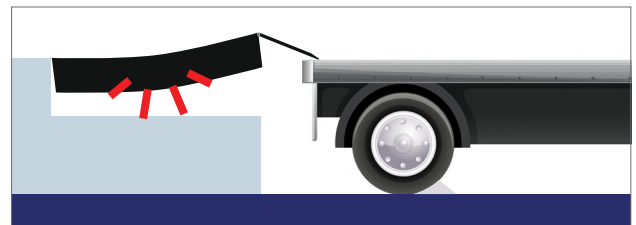
Do not operate the dock leveler if you are not in optimal health.



Do not leave the dock leveler's area unsupervised.



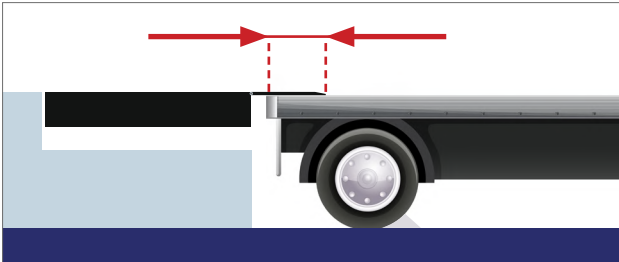
Fasten all transport vehicles with securing devices or chocks. Do not take out the wheel blocks or disengage the barrier mechanism before loading or unloading is complete and the vehicle operator has been cleared to leave.



Avoid using any dock leveling or restraining tools that are compromised or not prepared for working in the best conditions. Verify that all necessary maintenance and have been conducted before operating.



WARNING



Ensure the lip extends over the transport vehicle surface by a minimum of 4".



Maintain a safe distance from both lateral limits of the equipment.



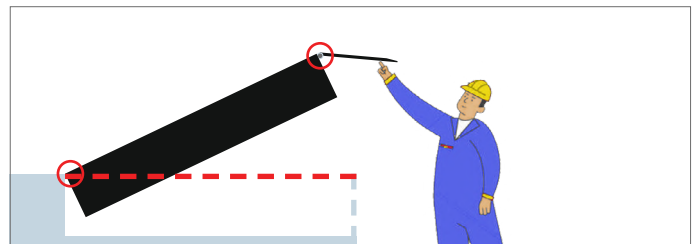
DANGER



When a truck is approaching or departing the area, Keep a safe distance from the dock leveling equipment.



If any person is placed underneath, do not displace or activate the dock leveling equipment



Keep your limbs away from hazardous nipping areas or active mechanical components.