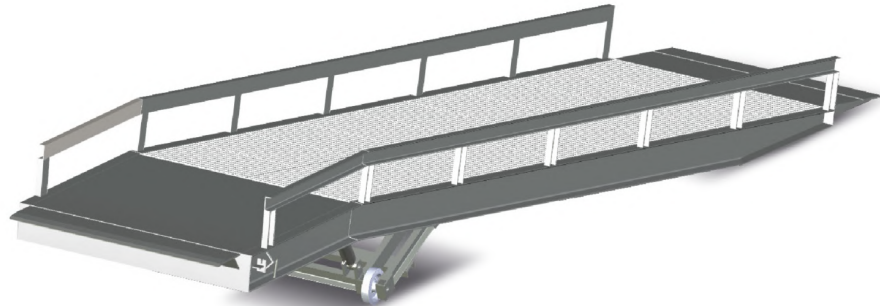




Loading ramps

PORTABLE YARD RAMP



The Alapont Logistics 40 ft transportable ramp is the most efficient solution when there is no loading dock available for loading and unloading.

They are **designed in compliance with the ANSI MH30.2 standard**. They are always balanced thanks to the travel train being located at their centre of gravity.

OPTIONS

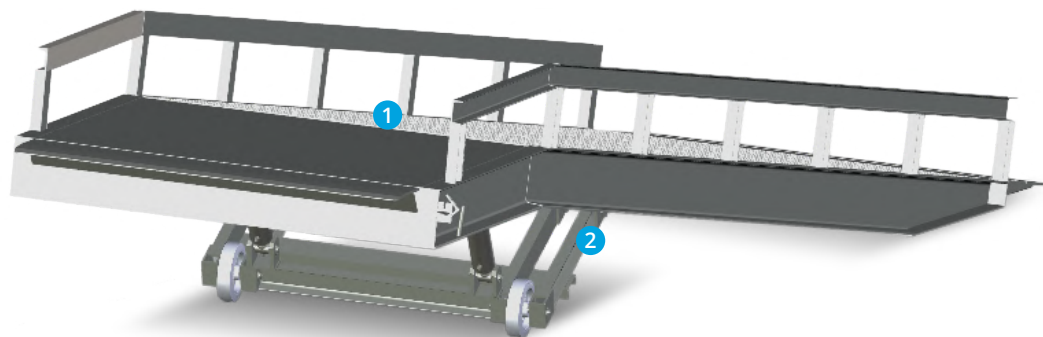
Manual

It is operated by a manual pump

Electro-hydraulic

It is controlled by an electric panel connected to the mains 220/380V. Three-phase with an electric motor of 1.5CV / 380V / 50Hz.

COMPONENTS



1. PLATAFORM

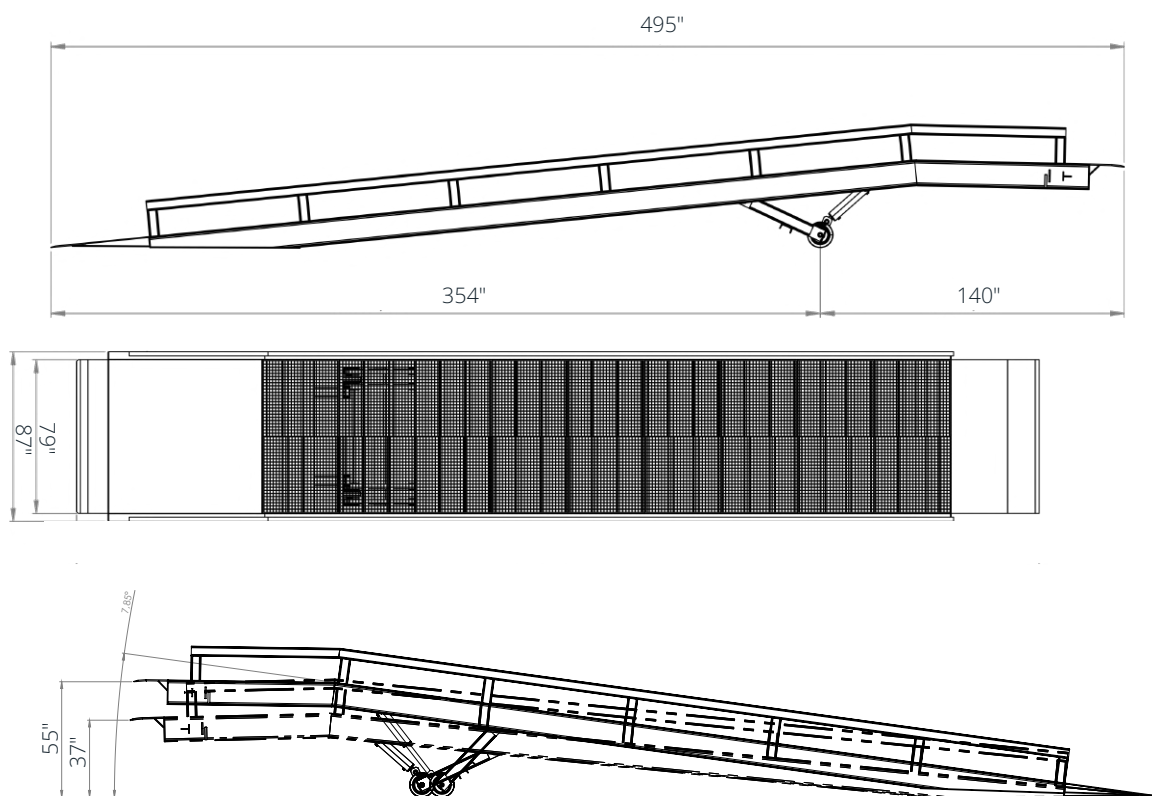
A structure built with hot-rolled steel profiles. The ends of the leveler are made of 1/4" non-slip diamond plate.

The rest of the rolling surface consists of electro-welded grating modules with an anti-corrosive galvanic coating. On the sides of the structure, there are integrated guardrails with high-visibility stickers on the exterior

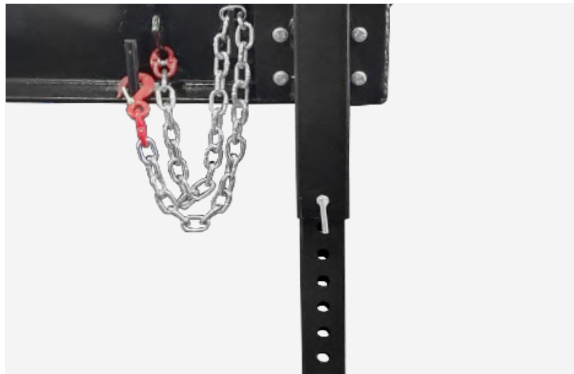
2. TRAVEL TRAIN

Made of hot-rolled steel sections, it has a travel unit with two cast iron wheels covered with vulcanised polyurethane. This travel unit is combined with a lifting unit made up of a hydraulic unit. The entire travel train is located in the centre of gravity of the ramp, which ensures that it is always balanced.

MEASUREMENTS



OPTIONS



Possibility of manufacturing the ramp with the support foot adjustable.

SAFETY SYSTEMS

- Chains securing the boom to the truck.
- Parachute valve on each hydraulic cylinder.
- Emergency stop.
- Non-slip track.

REGULATIONS AND CERTIFICATION

ANSI MH30.2



HYDRAULIC UNIT



- Hydraulic pump with a flow rate of 5 litres/minute.
- 7-litre tank with oil level indicator.
- Block where all the elements are incorporated (including solenoid valve with 24V control).
- 2 cylinders with Ø35mm piston rod for platform lifting with parachute safety valve platform with parachute safety valve.
- Hoses.

POWER OF HYDRAULIC UNIT 1,5 CV / 1,1 KW – 220/380V. 50HZ

OPERATING PRESSURE 70-100 bar

FLOW RATE 5 L/min a 1500 r.p.m.

SPECIFICATIONS	12M-6T
Overall length	39 ft 4 in
Length of upper incoming toe in truck	11 in
Length of lower support claw	13 in
Overall width outside	7 ft 5 in
Inner track width	7 ft
Width of truck inlet	6 ft 11 in
Maximum height	4 ft 11 in
Minimum height	2 ft 11 in
Maximum working slope	11.5% (approx. 6.5°)
Load capacity	13,230 lbs
Structure	ST-42 steel (equivalent to ASTM A36)
Maximum travel speed	6.2 mph
Climbing speed	63 s.
Downhill speed	50 s.
No. of wheels	2 wheels, 11.8 in diameter
Hydraulic cylinders	2 single-acting cylinders with central trunnions and parachute valve Piston rod diameter Stroke: 17.7 in (out of 11.8 in)
Hydraulic unit	Max. admissible pressure: 1,450 psi Working pressure: 1,015 psi Flow rate: 1.32 gal/min at 1,500 r.p.m. Pump: Gear pump Oil tank capacity: 1.85 gal
Electric motor	Power: 2 hp / 1.1 kW – 220/380V, 50Hz Protection index: IP 65
Own weight	7,715 lbs